

WOODCHUCK CHATTER



August 23, 2008

Volume 5, Issue 8

THE NEWSLETTER OF WOODCHUCK TURNERS OF NORTHERN VERMONT

An Affiliate of American Association of Woodturners

WWW.WOODCHUCKSVT.org

Next Meeting: September 6, 2008

We will meet at Russ Fellows' home (instructions follow) any time before noon for what I call "bench racing". Tips, lies, and fish stories are all welcome. Joe Laferriere will fire up the grill & crisp up some fine hamburgers & hot dogs. If your diet forbids these products, don't stay away. Bring the protein or substitute of your choice & challenge the chef. Please feel free to contribute an appetizer, side dish, or dessert. So we don't have to carry too much home, figure enough for 4-6 people.

After a suitable time for digestion, Al Stirt will share his skills with us.

You are invited to bring about 4 of your pieces for our planned "instant gallery". Al Stirt can be asked to examine and critique your pieces. He's an excellent source of information & advise, so fear not!

Directions to the Woodchuck Picnic on September 6th at the home and studio of Russ Fellows (Skunk Hollow Studios, LLC) 26 John Davis Dr, Jericho, Vermont, 802-899-3059

From the east/I-89: Take exit 11, Richmond, Essex Jct. Turn right at end of ramp. Right again immediately at the light. This is the River Rd/ Rt. 117. Go 3 1/2 miles, turn right on Skunk Hollow Rd. Go 2 1/2 miles, turn left on John Davis. Go all the way to the end, number 26.

From the Burlington area: Take Route 15 from Winooski going east. Go past St Mike's College and Ft Ethan Allen (both on left) and continue on to Essex Junction. At the Five Corners bear left, staying on Rt. 15. Stay on Rt. 15 through Essex Center and on to Jericho. There are signs. Once you are in the village of Jericho, (look for the big Red Mill at the bridge) you will see the world-famous Joe's Snack Bar.....turn right. Turn right again at the stop sign. Turn right again at the next stop sign.....about 1/2 mile. This is the start of Skunk Hollow Rd.....turn right yet again! The first drive on the right is John Davis Dr....take it! Go to the end, number 26.



Woodchuck Board Info.	2
Scott Bennett closing shop	2
From the Chairman	2
Treasurer's Report	3
July Meeting Notes	3
Demo Schedule	4
From The AAW	6
From The Sharpening Bench—Preventing Splits	7
Random Shots	7
The Story On Scroll Chucks	8
Loan Policy	9
Classified Ads	9
Mentor list	9

Regular September Meeting: Sept. 18

Back to the Shelburne Art Center! The regular program will start at 7:00 PM and will feature Ted & Russ (and perhaps others) demonstrating texturing techniques & devices. The President will call for nominations for the entire Board. In true Vermont fashion, you stand in danger of being nominated in absentia if you are not there. We feel that if you were interested enough to become a Woodchuck,

you are probably smart enough to help run the outfit.

Russ has set a Board meeting for October 9 at his place. All members are invited to take part. Please let Russ know you are coming.

Woodchuck Chatter

Woodchuck Turners of Northern Vermont

Board of Directors

President: Russ Fellows
26 John Davis Drive
Jericho, VT 05465
802-899-3059
skunkmen@together.net

Vice- President: Joe Laferriere
467 Galvin Hill
Colchester, VT 05446
802-479-4348
joekate@sover.net

Secretary: Randy Ramsden
2955 Mt. Philo Rd.
Charlotte, VT 05445
802-425-3434
rramsden@gmavt.net

Treasurer: Ted Fink
PO Box 850
Shelburne, VT 05482
802-985-2923
tjfturnings@gmail.com

Member-At-Large & Newsletter
Editor: Arny Spahn
Reporter, Assistant Editor, and
Proof Reader:
Cil Spahn
1626 Hebard Hill Rd.
Randolph, VT 05060
802-728-4799
apspahn@comcast.net

Woodchuck Chatter will be published monthly. Deadline for submissions is the 7th of the month. Please E-mail all submissions to the Editor in text or Word format. Visuals can be submitted as JPEG or TIFF.

From Scott Bennett

Hello fellow Chucks,

As probably most of you know, this will be a bit of a difficult week for me....on Thursday, we will be auctioning off all of our equipment....I am keeping the One Way and a few other items...so don't get too excited. I do have some wood products that someone may be interested in however. I have cases (many of them) of 4" x 8/4 Yellow Birch rounds and 4"x 4/4 Walnut. These are the centers of our ringing process. Also is an assortment of other wood rings and discs (walnut and birch) that never got made into anything. These are not advertised in the auction but will go as "lots"

if there is no prior interest. As club members, if anyone is interested in any of them, I would love to see you guys take anything that you want before Thursday. As you can imagine, I am totally flat out from now until the end of the month (have to be out of the building by the 28th.....daunting.....wanna help?) so please do not call....I really can't take the time to answer calls. If you want to stop by and grab anything please do so...but know that I CAN'T take time to chat with you...sorry. If you want to email me with question, I will get back to you at sometime probably in the very late night.

I know most of you turn green but if you have any interest

in anything, you have until Thursday.....oh yeah, with the price of heating fuel, you may be interested in the massive pile of hardwood "corners" that we have accumulated out back....great kindling....bring your truck or trailer.....first come.....

I hope after the dust settles (no pun intended) I will rejoin you all down in Shelburne.

Best,

Scott

From the Chairman's Desk



Greetings fellow Chucks!!

As always, the summer just flies by.....and a little soggy than normal! But, hey, this is Vermont and we all know that there is really no such thing as normal! I hope you all are getting in some good R & R time, in whatever form you prefer!

As you all are aware by now, the date of our annual picnic was a "moving target" for quite a while, but finally we were able to settle on Saturday, September 6th. It will be held at my house/studio in Jericho, directions to which will be posted elsewhere in this issue of "Chatter". This event will go on, rain or shine, as I have sufficient space to move indoors if need be. The plan is to gather late morning, between 11:00 and 12:00, have a little time for socializing, chit chat, maybe a walk down to the river, and then "ramp up" the food. We covered food responsibilities/donations at the July meeting, and I will be contacting those Chucks individually about specifics. We will have most everything covered, but if you have special dietary needs and/or wishes that you would like to see, please bring such items. I guess I am thinking of contributions to the "munchie" table here.....any little addition would be

welcome. Also, if you have a folding chair or two, that would be helpful, particularly if rain forces us inside and we can't spread ourselves around outside. Following lunch, we will move over to my shop where our stalwart and generous club "guru" and honorary club member, Al Stirt, will do a demonstration. We are so fortunate to have such a world-class turner in our club and are very grateful for his continued generosity with his time, and willingness to be a part of this annual event. I encourage each of you to bring in an item (or more) you have made, for a gallery table/expanded show and tell. It will be a chance to have your work be reviewed and critiqued, and maybe ask Al some questions! I expect we would be winding things down by 4:00-4:30. Obviously your wife, husband, partner, significant other, is most welcome, indeed, encouraged to come, or if none of those fits, how about a friend who has interest in turning and hasn't yet joined our group? Finally, to help us in our final preparations, please be sure to notify me no later than September 1st if you are planning to attend, and how many in your "party". 802-899-3059, 802-343-0393, skunkmen@together.net. Thanks!!

By sheer coincidence, as an added bonus for any bikers in the club, one of my adventure touring buddies and his wife will be stopping in on their way home from a week in Canada (although it is a bicycling trip for them this time!). He is a published moto-journalist and always a fun guy with whom to swap war stories!

It is now officially "official", The Woodchuck Turners of Northern Vermont will have a booth at the annual Fine Woodworking and Furniture Festi-

(Continued on page 4)

July Meeting Notes

Monthly Meeting 7/17/2008

Meeting called to order by Russ Fellows, who next called for us to introduce ourselves. Next, the minutes of the last meeting were approved.



The Annual Picnic date is changed to September 6th @ Russ' house in Jericho. Russ discussed need for a gas grill, salads and deserts. Grilled items and beverages will be provided by the club. Bring some items for an



instant gallery.

Fine Furniture Show in Woodstock – It was agreed that the club will have a booth with Russ as the point person. Percentage of sales will go towards offsetting the booth cost.

Vermont WoodNet closed the Maplewood Gallery in Stowe. Hope everyone picked up any

items there.

Web Site – Jim Cunningham's has the new website up and running @ Moonfruit.com.

Anchorseal – is still available. Ralph has the remaining supply at his shop. Price is \$10/gallon

Hats – Ted has them for the low price of \$7 each.

Raffle:



Show & Tell



Mickey Palmer & one of several nicely finished pieces. The next few pix are his work.



Tom Dunn's pretty vessels



Steve Scholtz & his work.



Greg's Big Bowl



Craig & his lidded vessel.



Randy & a puzzling but attractive piece of sugar maple

(Continued on page 5)

Treasurer's report

Balance Forward	\$2719.16
Income	
Raffle	34
Dues	40
Hats	49
Anchorseal	20
Expenses	
New website	74
Woodstock show booth	360
Balance Forward	\$2428.16
Ted Fink	



Please welcome new members:

Ira W. Sollace 580 West Hill Road; North Middlesex, VT 05682 802 229 4326
ISollace@yahoo.com

Paul Henderson; 300 Grove St., #12.; Rutland, VT 05701; 609 335 8000 plynas@comcast.net

Woodchuck Sightings

Randy Ramsden @ Shelburne Farmers Market – July 26th

Craig Hall @ Ben & Jerry's - ongoing

(Continued from page 2)

val, to be held in Woodstock the weekend of September 27th-28th (<http://www.vtwoodfestival.org/>). Craig Hall and I are coordinating this, and as I have said previously, I strongly encourage you all to submit a piece or two for our table. You will receive \$\$\$ for this, as it is a selling event as well as a resource and information-sharing event. The club will charge you a percentage, until we have....hopefully!....generated enough cash to cover some or all of our expenses, after which you will get to keep 100% of your "take". (compare that to gallery commissions of 40-50% these days!) So even though you consider yourself a novice or hobbyist turner, this is a great opportunity for those of you who have not made much of a commercial push with your work, to "test the waters"! 'Small' can be beautiful.....anything will be welcome! You can bring your submissions to the picnic or our regular monthly meeting in Shelburne on September 18th. And as a final note, I hope a few of you are thinking about attending this event. We welcome you in the booth to help "chat up" visitors and spread the "Woodchuck message".....and give Craig and me an opportunity to take a break.....get a cup of coffee, etc!!

Your board of directors wish to amend our by-laws to increase the number of members-at-large (currently we have only one.....Army Spahn), to reflect the growth of our club in the last few years. This is great! It means our mission is succeeding and our word is spreading.....thanks in part to our website, more of which shortly. It is thus our proposal to add one member-at-large now, and one more for every twenty new dues-paying members that we add going forward. In keeping with the requirements of our by-laws, you are being "warned" of this at least six weeks prior to our annual meeting in October, at which time it will be brought up for a vote by the membership.

We now have a new website! Sincere thanks to Ted Fink for laying the groundwork with a new software site(with the somewhat unlikely name of 'Moonfruit!')....and to our webmaster Jim Cunningham for doing the actual construction. As before, there is a members' gallery section, which we would love to see expand to include YOUR work! As with the booth at the woodworking festival, this is a chance to showcase a little of your work, only with the gallery there is no marketing component, so you can be as whimsical and free-spirited as you want.....and change it as often as you want! Go to the website.....www.woodchucksvt.org. There are instructions and a link to get you to the gallery sec-

tion. While you are there, have a look around the site and send Jim a note with your thoughts, and thanking him for his significant (and donated!) efforts on behalf of the club.

I want to welcome two new members this month! Ira Sollace from North Middlesex and Paul Henderson from Rutland. Great to have you on board! Hope to see you at a meeting soon.....or, maybe the picnic on Sept 6th?! Even though you are brand new to the club, you of course, are welcome to attend!

Another reminder that our 20% discount with Hartville Tool "sunsets" on August 31st when our first year agreement with them ends. After that it is "only" 15%.

The Vermont Wood Manufacturers Association informs us that the 5th Annual Wood Design Competition will be accepting entries until Sept 1st. Write to info@vermontwood.com for more, well, info. on this.

As you all are aware the internet is full of....no, overcrowded with!.....groups of every imaginable kind, and woodturning is no exception. A while ago I stumbled on a Yahoo group called Creative Woodturners (<http://groups.yahoo.com/group/creativewoodturners/>) It caught my eye because they focus on my particular area of interest, segmented turning. It is fun and instructive to chat with chucks from around the world about our common concerns, issues, and problems. I have found a turner on the island of Maui who I am going to try to connect with when I am there later in the year!

The next Woodchuck board meeting will be Wednesday October 8th at my home in Jericho. As always, it is open to all the membership.

Our next regular meeting in Shelburne on Thursday September 18th, 7:00 sharp! ;-) I will be asking for nominations for club officers and members of the board at large for the coming year....elections to be at the October meeting. The demonstration will be 'texturing techniques', by Ted Fink and me, but this is one area where many of you have developed your own methods, so we will welcome others to join in.....don't hesitate! See you then!

I send a big Woodchuck "howdy" to you all. Hope to see many of you at the picnic!

Russ Fellows

**In House Demos:
August .
No Meeting.**

**September 6th
Annual picnic @
Russ Fellows home
in Jericho. Al Stirt to
demonstrate.**

**September 18:
Texturing. Ted &
Russ.**

**October
Randy, Xmas
ornaments.
Elections & Bylaws
Vote.**



Prez. Russ & two recent works

Demo: Ralph demonstrated using Google's SketchUp Product



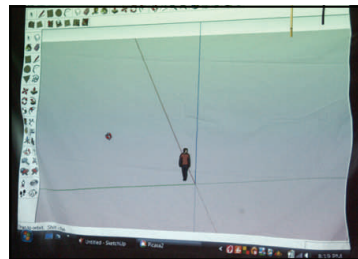
This is the ceremonial mace which prompted Ralph to design a router jig on SketchUp.



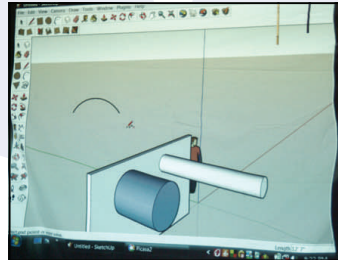
The head of the finished product.



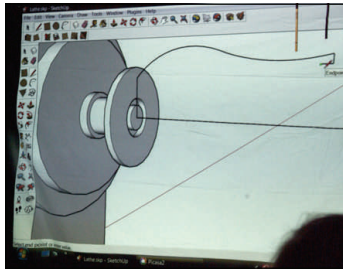
Here's Ralph inserting the router into the jig designed with SketchUp



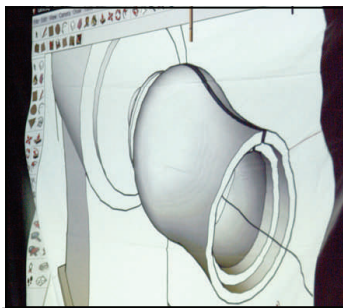
This shows the 3 axes around which you can construct a 3D object drawing.



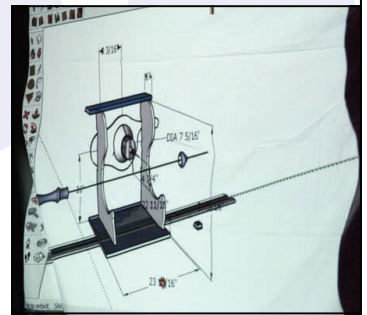
This shows constructing solids with a simple command and clicking an icon.



The first steps in planning a vase on the lathe.



Nearly finished design.



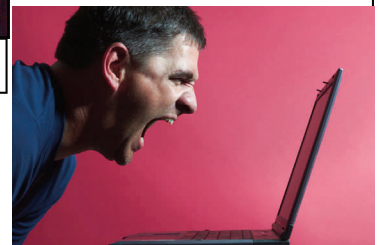
Ralph's final sketch for the sliding router fixture.

If you missed it, here is the Google Ad:

Google SketchUp is 3D for everyone

Google SketchUp is software that you can use to create, modify and share 3D models. It's easier to learn than other 3D modeling programs, which is why so many people are already using it.

We designed SketchUp's simplified toolset, guided drawing system and clean look-and-feel to help you concentrate on two things: getting your work done as efficiently as possible, and having fun while you're doing it.





All AAW members know what they like best about their membership but some chapter members may not yet be AAW members and may wonder what benefits await them when they do join the AAW. If someone does not join AAW, the result may be they do not get as involved, may not learn as fast as they could, may not get "hooked" on woodturning, and may not become contributing members of your AAW chapter. What a lost opportunity that would be.

There are eight primary benefits of membership in the AAW. Following is a brief description of each benefit:

- * 300 AAW Chapters in North America and around the world which are a great place to meet other woodturners, to share ideas, and to learn. They have monthly meetings with demonstrations and many other activities.
- * AAW Journal: American Woodturner is The Journal of the American Association of Woodturners with high quality, full-color publication with a wealth of information for woodturners with articles on all aspects of woodturning and is published quarterly.
- * AAW Resource Guide: Lists all AAW members with contact information and lists all local chapters, with addresses and meeting times as well as information on Chapter Best Practices, the AAW Member Web Site, Star Chapters, 20th Anniversary Chapters, AAW bylaws, AAW Board of Directors, educational materials such as books and videos, lathe safety guidelines, and a host of other things and is published annually.
- * AAW Symposium: World's largest gathering of woodturners with approximately 60 world-class demonstrators, a trade show with every major manufacturer of lathes, tools, and

turning supplies and accessories in the world, an instant gallery with hundreds of the world's best wood turnings, a Youth Training Program, with lathe/equipment give-aways to participants, a banquet and auction of selected woodturnings from the Instant Gallery and much, much more. The 2009 Symposium in Albuquerque June 26-29, 2009.

- * AAW Website: www.woodturner.org which is a great source of current information about the AAW and contains contact information for every AAW member world-wide, contact information for demonstrators, a guide to all local chapters, meeting times, locations, and contacts. It has current events, a gallery of current work, membership information, and much, much more.

- * AAW Forum: www.aawforum.org which is an interactive web site for AAW members where you can interact with woodturners from around the world. It is a great source of current information where you can post your questions, comments, information about your woodturnings, photos, etc. and seek information about woodturning resources, such as:

- * Machinery, tools and supplies
- * Wood
- * Publications
- * Educational Opportunity Grants; almost \$100,000 in grants given away this year for individuals, clubs, schools. They are for any qualifying educational opportunity. See the AAW web site for details.
- * AAW Liability Insurance: Liability insurance for Chapter sanctioned events. See the AAW web site for details.
- * Anyone who wishes to join the AAW may become a member simply by visiting the AAW web site at <http://www.woodturner.org/org/mbrship/> and signing up.

- * To see a presentation on the Value of Membership in the AAW, You can view either of two versions. One is in Microsoft PowerPoint format at http://www.woodturner.org/info/news/letters/AAW_Value_Proposition.ppt#276.1.Slide. The other is in PDF Adobe Reader format at http://www.woodturner.org/info/news/letters/AAW_Value_Proposition.pdf. Please use whichever you prefer.

Thanks and good turning!

Tom Wirsing - AAW Board Member

Woodchuck Mentors

These Woodchucks are able and willing to help other Woodchucks needing some hands-on instruction.

Craig Hall: Bowls, spindles, & hollow forms.

802-644-5344

craighall@hotmail.com

Dick Montague: General turning, all aspects plus tool sharpening.

802-584-3486

Montagueturn@hotmail.com

Ralph Tursini: Spindles & bowls, vacuum chucking.

802-899-6863

Tursini@pshift.com

Ted Fink: Bowls, spindles, & boxes.

802-985-2923

jantedfink@gmail.com

Russ Fellows: Segmented vessels.

802-899-3059

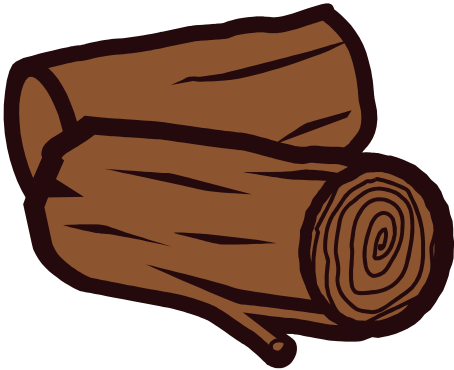
skunkmen@together.net

Bill Walsh: tool sharpening

802 482 215

billiriquois@yahoo.com

Preventing green turning from cracking (part 4 – a sidebar)



The first article went into detail about why wood cracks (the theory). To make good judgments about what techniques will best suit your situation, I recommend you understand that article.

There are many complications, steps, combinations, and possibilities when drying wood blanks or green turnings. Let's say you want to try the "soaking in denatured alcohol" method. You rough turn a 22" bowl from freshly cut maple that has a 2 1/2" rim and 3/4" sides with the grain across the top and then soak it completely submerged with a rock in denatured alcohol for 24 hours. Next, put it in a paper bag in a cool place for a week followed by 3 days out of the bag under the bench. Next, finish turn it to a 1 1/4" rim with 5/8" sides and a round bottom (no foot), followed with mineral oil finish every other day until no sign of dry surface. (Take a breath here). You have just created at least 21 variables. That is 21 techniques, sizes, conditions, materials, grain orientation, time periods, form, and tem-

peratures. In addition, the "rough turning" could have a smooth or very rough and uneven surface. The thickness could be consistent or vary; under the bench could be warm, cold or the same as the cool place. The weather could have changed from dry to damp, and so on.

If you want to change this process and know for sure the change was responsible for whatever happened, you must change or recognize one variable at a time. If you tried this summer with the long stretches of high humidity you may not get the same results this winter with the wood stove going in a very low humidity environment. The humidity would have slowed drying and may have a bigger influence than bagging on splitting. A lot of work goes into your turning. While working out best practices for your situation change only one thing at a time.

The above long example is a combination of many ways to prevent cracking (have the wood dry at an even rate all the way through). If you wanted to see if you could skip the bagging step, try a few bowls each way while doing everything else the same. If they are all okay, try another set and change one other thing, perhaps the type of wood. Remember, some fruit woods and others like them tend to crack easily. If you find a method that works on these woods, it will likely work on less sensitive species.

Note that some variables may not be obvious. Blanks cut from leaning trunks or large horizontal branches will have "reaction" wood. The up side will be "tension" wood and the down side will be "compression" wood. The extra growth can result in the growth center of the tree being closer to one edge. Soft woods have the thicker "half" on the down or compression side and it is denser but

more brittle. Hardwoods are sometimes thicker on the tension side which can be stronger but often has uneven shrinking and is apt to shrink 10 to 20 times as much along the grain. Most woods shrink very little along the grain. Tension wood can create a fuzzy surface when cut. Even when sanded it can be uneven if stained.

For those of you with any interest in the details of the nature of wood I highly recommend R. Bruce Hoadley's books: "[Understanding Wood](#)" and "[Identifying Wood](#)".

Since I mentioned finishing I will recommend the following well presented article on a variation on fuming.

<http://www.iswonline.com/ArticleLanding/tabid/67/Default.aspx?tid=1&contentid=12746&issueid=468>

It has links to these related articles and other information.

[Tried-and-True Colorant](#)

Posted May, 13 2008

[A Little About Spalted Woods](#)

Posted February, 12 2008

[The Cross-Hatch Adhesion Test](#)

Posted November, 13 2007

[Think Twice, Finish Once](#)

Posted August, 20 2007

Dick Montague

Random Shots

I've temporarily given up my spot on Page 2 because Scott's news is more important than my mumbblings this month.

Here's a tip for avid Chatter readers. The photos are pretty small so I can cram as many as possible in each issue. Adobe Reader has a "magnifying glass" tool on the toolbar. Use that to zoom in on any picture you'd like to study more closely.

I'm really grateful that Randy contributed his article on scroll chucks. He answered a question which I was too timid to research. Jaws from Oneway fit on the Nova chuck. I have a selection of Nova jaws and some of the Talon jaws look better formed than some of the Novas.

Scroll chucks are very useful, but they aren't magic bullets for all kinds of turning. Sometimes a faceplate is the only way to hold a piece, and a set of Jumbo Jaws, which open to 10.5" can be very hazardous, especially if you need to make a deep cut.

Lastly, read the proposed amended Bylaws I've attached. This is the final notice before we are called upon to vote on them. If passed in October, the Board will have the option of appointing a member to the second at-large position on the Board.

Safe turning,

Arny

The Story on Scroll Chucks

After having my Jet mini lathe for a short while I decided that a four jaw chuck would be a great addition to my woodturning tool collection. After some reading on the Internet I decided that the Oneway Talon chuck would be the best choice. It is the smallest Oneway chuck and designed for mini lathe applications.



Top: Talon with #2 jaws. Nova G3 with Talon #1 jaws
 Bottom: Talon #3 jaws Nova #2 jaws

My initial surprise was the cost of the chuck was more than the lathe itself. After using it for the past four years all I can say is it's worth every penny. The chuck comes standard with the #2 jaw set and the screw chuck insert. Make sure you specify the correct thread to match your lathe at the time you order it. The neat thing is when you get your second lathe (or third) you simply purchase the correct threaded inset to match a different spindle size.

The #2 jaws are great for most all around chucking needs. But as you expand the number of different types of turning projects, the ability to have chucking flexibility is a great thing. I have added both the #1 & #3 jaw sets to my collection. The #3 jaws allow me to leave a large tenon on a bowl which in turn makes for safer turning and reduces vibration in the piece somewhat. Having a large maple bowl blank come flying off your lathe can really ruin your day.

So now you have a great tool, lots of jaw options, and you forget there are other ways to hold wood on your lathe. Face plates, glue blocks, and turning between centers become a thing of the past. So begins the swapping of jaw sets as you move between projects. This is ok at first because you use the chuck for most everything. After a while you start dreaming of a second chuck where the other jaw set can have a permanent residence. No more unscrewing of jaw plate screws, just spin one

chuck off the spindle and spin another one on.

Like most everything, you look up the cost of a new chuck and it now costs a few bucks more. For some folks, the need for a second chuck is no big deal and I read some discussion boards where having a chuck for all the different jaw sets is a mandatory thing – not on my budget however.

My idea for a second chuck was to purchase either another Talon or the larger Oneway chuck. By this time I had a much larger lathe and wanted to turn larger stuff. After doing a little research, I chose a different option. Blame it on a sale at the turning store, and a gift certificate, I decided on the Tekna-tool Nova G3 chuck. Other turners in the know had described that the G3 would accept jaw sets from the Talon, and that it was very good quality. It turns out they were right. The Talon jaw sets do fit. They have a slightly smaller “throw” meaning the tenon size falls into a slightly smaller range between smallest and largest tenon that can be safely held. And if you use the chuck to expand inside an opening, you are slightly limited there as well. Otherwise they both accomplish the same task of holding a turning to the lathe spindle.

There are some other differences between chucks that you should strongly consider before making a purchase.

The most significant difference is the direction the key is turned to tighten or loosen the grip – they are opposite of each other. Turn the key clock-wise to tighten the Talon and counter clock-wise on the G3. If you don't pay attention this could hurt you so please think about this before making a decision. If you don't currently own a chuck this is no big deal. They both have the strength and holding ability regardless of which way you turn a key.



Close up of the #2 jaw sets

The standard jaws on the Nova G3 have smooth inside faces unlike the Talon which has

serrations. These serrations add to the holding ability but planning ahead to turn away the tenon must be factored in. If you don't want to mar your work and only need a moderate grip on the piece the smooth jaws are just the ticket. Oneway does offer smooth jaws as an option.

The threaded insets are NOT interchangeable between chucks and neither are the chucks keys. Don't lose your chuck key as I hear they are expensive to replace and only available from the respective manufacturer.



Backside of the chucks and the screw adapter shown.

Conclusion:

Both chucks are great. I do like the Talon best and maybe that's because I had it first and it has never let me down. There is nothing wrong with the Nova G3 and if you can find it on sale, it is the best value for your money in my mind.

Randy Ramsden – July 2008

The Newsletter of Woodchuck Turners of Northern Vermont

Publisher: Arny Spahn 1626 Hebard Hill Rd. Randolph, VT apspahn@comcast.net

Classified Ads

For Sale: Complete wood turning/ woodworking shop. Many excellent professional grade tools. Dave "Herb" Hurlbut wishes to sell the whole shebang as a unit. The equipment is valued at \$12,500. Give Herb a call at 802-527-0892

Policy on AAW Liability Insurance

Members of WTNV who are giving public demonstrations are covered by the AAW-sponsored liability policy under the following conditions:

You must be a member of

AAW and WTNV. The event must be "sanctioned" by WTNV. That is, you must notify the Treasurer, who will provide a copy of the cover sheet for the policy. You

must also notify the editor of Chatter so you can be listed in Future Woodchuck Sightings.

The demonstration must have wood turning as the main subject.

Policy On Borrowing The Club Lathe and Tent

This is the policy which was formulated at the October 2004 Board meeting. It was first printed in the October 2004 Woodchuck Chatter.

The primary goal in buying these tools is to have good equipment available so we can demonstrate in public, thereby attracting new members and recruiting would-be turners.

All members in good standing (paid up dues) are eligible to bor-

row the equipment primarily for demonstration purposes. We may borrow the equipment for ONE WEEK at a time. The Treasurer is responsible for knowing where the equipment is at any time; therefore the borrower is responsible to sign the equipment out—by phone or in person— and back in.

The lathe and its parts are a unit. Don't ask to borrow only the chuck or other parts.

The borrower is responsible for transporting the equipment to and from its storage location. The borrower is responsible for re-

turning the equipment in excellent condition with all its parts intact.

The borrower is responsible for any liability rising from the use of the equipment.

Only club members may operate our lathe to avoid litigation by untrained turners.

The Chapter has first dibs on all equipment so that we can show our stuff at public events.