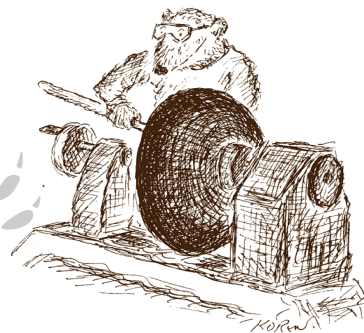


WOODCHUCK CHATTER



November 11, 2008

Volume 5 issue 11

THE NEWSLETTER OF WOODCHUCK TURNERS OF NORTHERN VERMONT

An Affiliate of American Association of Woodturners

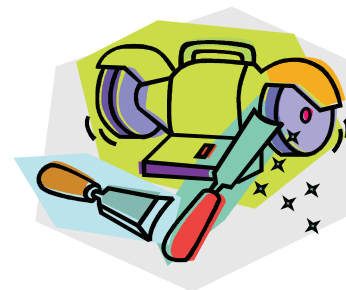
WWW.WOODCHUCKSVT.org

Next Meeting: November 20, 2008

Here's an opportunity to work at sharpening your tools under some experienced tutelage. Bill & Ralph will show how to put a proper edge on a number of gouges. The shape of the cutting edge is important, too, and we'll be able to see some different takes on shapes and cutting angles. Should you hone edges or not? What's the difference to the work and to the time on task?

Are there times when you should hand sharpen a tool rather than use the bench grinder? What types of stones should you use with what types of steel?

Bring your own tools for this demo; both the tools you use regularly and the tools you almost hate to use.



Woodchuck Board Info.	2
Random Shots: fix it before you need it	2
Greetings From Skunk Hollow	3
Treasurer's Report & New Members.	3
Demo Schedule	3
October meeting	5
Wise Woodchuck. Dust removal	6
Policy on Insurance	7
Policy on borrowing Club Property	7
Classifieds	7

Because of my e-service going down on Monday, I could not receive any "on deadline" articles from any one. That's why this issue is less filling than usual. If you get this on 11/11, I was successful in transporting it to my portable and then finding a Wi-Fi spot downtown. See "Random Shots.

Army

From The President's Desk

From the cluttered office of your newly re-elected President: Greetings Fellow "Chucks"!

The national election is over....finally....and so is ours, and I want to welcome all board members and congratulate them on their hard-fought campaign success. All of last year's members were re-elected and in addition, due to the increase in the size of the membership of your club, we added two new members-at-large, Ralph Tursini and Craig Hall. Both have previously served on the board and it is nice to have them back again!

I also want to welcome two

new members: Peter Coffey from Bristol and Al Gilbert from Charlotte. Nice to have you "on board"! It is great to see our club extending its reach a little more.....that is what it is all about!



I want to point out two errors of omission in the member list I handed out at the last meeting. There were two lists that had been brought in, mine, with a tan card-stock cover and Army's with a white paper cover. My list did not have Ira Sollace and Paul Henderson. Sorry!! Still not sure how it happened, but we will have corrections for you at the meeting next week or by email.

Due to a computer crash I did not get a column to Army for last month's "Chatter". I was planning to give a brief summary of the "Woodchucks at Wood-

(Continued on page 4)

Woodchuck Turners of Northern Vermont Board of Directors

President: Russ Fellows
26 John Davis Drive
Jericho, VT 05465
802-899-3059
skunkmen@together.net

Vice- President: Joe Laferriere
467 Galvin Hill
Colchester, VT 05446
802-879-4348
joekate@sover.net

Secretary: Randy Ramsden
2955 Mt. Philo Rd.
Charlotte, VT 05445
802-425-3434
ramsdn@gmavt.net

Treasurer: Ted Fink
PO Box 850
Shelburne, VT 05482
802-985-2923
tjfturnings@gmail.com

Member-At-Large & Newsletter Editor: Arny Spahn
Reporter, Assistant Editor, and Proof Reader: Cil Spahn
1626 Hebard Hill Rd.
Randolph, VT 05060
802-728-4799
apspahn@comcast.net

Member-At-Large: Craig Hall
823 Westman Rd.
Cambridge VT 05444
Phone: 802 644 5344
craigllhall@hotmail.com

Member-At-Large: Ralph Tursini
1011 Cady Hill Rd.
Cambridge VT 05444
Phone: 802 644 5131
info@vermontwoodturning.com

Web Master: Jim Cunningham
65 Munsill Rd.
Bristol VT 05443
Phone: 802 453 2453
rustic@Gmavt.net

Do you ever find yourself having to fix equipment so you can get a project going? It seems to happen to me a lot. Yesterday, I made up a shelf/curtain rod thingy so we could put up an insulating curtain over the front door. It has two full-length glass lights so it's a source of cold air. We never use the front door during the winter, any way. Does anyone in rural Vermont? I needed my bandsaw to shape some parts. It went OK for the first cut, but when I started a tight curve, the blade just wasn't right. It was too wide and the set of the teeth were wrong. I just couldn't make a small radius curve. I looked on my shelf and there were no 1/4" 4 or 6-tooth blades.

It called for a trip to West Lebanon, our closest source for all the rest of the things on our shopping list. Even with gas at about half the cost it was during the summer, we don't take a trip out of town for one item.

Anyway, I picked up an assortment of blades. My band saw is a Delta 14" which seems to be the most popular size. The Delta is really a lot better built than the Taiwanese saws I've used and seen. I can change a blade in two minutes without tools. It tunes up quickly. So I was back to work in time to finish the project yesterday.

Lesson: If you have a multi-purpose tool, have spare bits or blades for your typical projects.

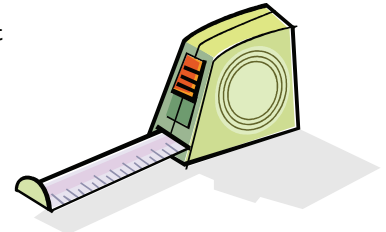
Today, the situation was upstairs here in my office. I sat down to put "Chatter" together, and my mouse would not move. Apparently my USB card had failed. No matter which port I plugged into, the pointer would still not move. The details may be more technical than some of us care to learn, so I'll keep it brief. Back in the good old days before Windows, there was just a keyboard to tell your PC what to do. Then Steve Jobs et al came up with what's called a graphical interface—point at a command and click. Windows followed for PCs, using a mouse also.. New PCs had a separate socket for every device not part of the basic computer.

Then someone figured out that all the PC tools like printers, keyboards, mice, etc. could work on the same type of info system, or bus. Voila! The USB concept kicked in. USB stands for Universal Serial Bus. I don't understand the name as all these gadgets seem to work in parallel. Anyway, on this generation of PCs everything except the monitor can be hooked up to the USB card. If that card fails, you are up the creek. I spent the first hour of my day plugging and unplugging, starting and restarting. Finally, everything started working—except I had no Internet connection or phone service. No email, no phone, no NY Times & stock reports.

I've been through this before. Part of the solution is to re-boot the cable gismo which translates the hash from Comcast into internet & phone frequencies. A half hour later, my email started to work & I sent out the latest corrections to the member listings. Still no phone, so I couldn't call Comcast & get help.

The cable guy who originally installed my HD access had run out of stuff to make the phone connection and put in a jury rig. Fortunately when I went out to my local hardware store and bought a simple 3-way connector & new telephone wire, the fix worked. It didn't cost me much to get back to working on Chatter, if you don't count the hours spent trouble shooting three distinct, simultaneous failures. And then the modem went down again. I need a service call before I can get Chatter

out. I don't know if I can draw a lesson out of this snafu unless it's not to buy stuff you are unwilling to study fixing.



One more word on measurement. Looking at the deed to my place, I find that the measurements are given in rods & chains. I decided to decipher them into quantities I could grasp, so I went to my infallible source and retrieved these interesting references.

Just think how boring life for bookies, lawyers, surveyors, spirits merchants, and pharmacists would be if we were to convert to the metric system!

- 7.92" = 1 link
100 links or 66 feet = 1 chain
16.5 feet = 1 rod
4 rods = 1 chain.
40 rods = 1 furlong.
10 chains = 1 furlong
8 furlongs = 1 mile
80 chains = 1 mile.
3 miles = 1 league

- 144 sq. inches = 1 sq. foot
9 sq. feet = 1 sq. yard
30 1/4 sq. yards = 1 sq. pole (sq. rod or perch)
40 sq. poles = 1 rood
4 roods = 1 acre
16 sq. poles = 1 sq. cashin
43,560 sq. feet = 1 acre
4840 sq. yards = 1 acre
100,000 sq. links = 1 acre
10 sq. chains = 1 acre
640 acres = 1 sq. mile



Arny

My part-time "hobby" continues to be a full-time effort. All of you who have visited my shop have noticed how many "works in progress" I always seem to have.....and now is no different! My galleries are keeping me busy and have asked for additional inventory to ramp up for the holidays. My only store in New Hampshire, The Sharon Art Center in Peterborough, called me a week ago to tell me they wanted me to be the "artist of the month" for November..... THIS November!! I scrambled a little and put together eight new pieces and delivered them Monday morning (apparently I was there just after John McCain stopped in on his whirlwind final tour??.....but I never saw him, and he didn't buy anything!). It is, of course, an honor to get a special feature and display in any location, but a little bit longer lead time would have been helpful! One of the pieces I took them was the humongous bowl I had been working on that I mentioned in 'show and tell' in September. They like large and unusual things there.....and that qualified.

Right now I am busy putting together inventory for the annual "Art & Artisans" Holiday Market to be held at the Mount Mansfield High School, November 15th & 16th. This is a really great little show with a very diverse group of area artists and vendors and their 15th YEAR of doing it!! Take a drive out to the country next weekend if you have time, say 'hello'....and do some early Holiday shopping! No admission is charged and the wide array of items offered are very much in the "affordable" category! As with my Spring Open Studio sale, this is when I buff up all my 'seconds', 'prototypes', and old stock and price things to move! I also make up a bunch of cutting

boards from accumulated exotic shop "scraps" which sell out quickly.

Gotta get back to the "sawdust"!

Cheers,

Russ Fellows



In House Demos:

November 20:
Practical demo on sharpening tools.
Ralph & Bill Walsh guide you. Bring in some sharp or dull gouges.

January 15th: Round Table. Members bring their techniques, tools and share ideas.

February 19th: To be announced.

March 19th: 2 short demos by Ted. Making wooden faceplates with a wood tap. Altering tool handles for a better grip.

April 16th: TBA.

May 21st: Michael Mode?

June 18th: "Green" practices or a guest speaker from away.

Treasurer's report

Treasurer's Report:

Balance Forward	\$2201.38
Income:	
Bizland refund	53.50
Dues	60.00
Raffle	32.00
Expenses	
Board mtg. food	12.98
DVD's	<u>316.17</u>
Balance Forward	\$2017.53
Ted Fink	



Please welcome newest members,

Peter Coffey,
 17 Plank Rd.
 Bristol, VT 05443-1009
pcoffey@gmavt.net
 802 453 3538

Al Gilbert,
 190 Red Tail Lane,
 Charlotte, VT 05445
Albarcelona@excite.com
 802 425 3838

From The President's Desk—Continued

(Continued from page 1)

Woodchuck Mentors

These Woodchucks are able and willing to help other Woodchucks needing some hands-on instruction.

*Craig Hall: Bowls, spindles, & hollow forms.
802-644-5344
craighall@hotmail.com*

*Dick Montague: General turning, all aspects plus tool sharpening.
802-584-3486
Montagueturn@hotmail.com*

*Ralph Tursini: Spindles & bowls, vacuum chucking.
802-899-6863
Tursini@pshift.com*

*Ted Fink: Bowls, spindles, & boxes.
802-985-2923
jantedfink@gmail.com*

*Russ Fellows: Segmented vessels.
802-899-3059
skunkmen@together.net*

*Bill Walsh: tool sharpening
802 482 215
billiriquois@yahoo.com*

stock", but since I did cover it at last month's meeting, I will only add a footnote here. There was a typo in the report in "Chatter". The club booth did a total of \$4,329 in sales, not the \$436 that was reported. We were pleased with this and plan to do it again next year. And finally, congratulations to fellow Chucks Ted Fink, Tom Dunne, and Craig Hall, all of whom brought home ribbons from the woodworking competition which is a part of the show every year.

I have received communication from the national club... "The American Association of Woodturners" (we are a local chapter) soliciting new members. All of our board members and officers, and many in our membership belong to the national already. If you are not, I urge you to go to their website www.woodturner.org and check it out. They have a lot of information on the site, including a members' gallery, they publish an excellent quarterly journal...."American Woodturner" for members, and sponsor the annual woodturning symposium....this year being held out in Albuquerque. This is a great resource for all woodchucks! I keep application forms in my briefcase and will have them at the meeting. Please ask me. You can also do it online.

I have also just received an information packet from the Adirondack Woodturners Association regarding a symposium they are sponsoring March 28 &

29, 2009 in Saratoga, NY. It is called Totally Turning 2009 (www.totallyturning.com) and is being held in conjunction with 'Showcase', the annual gathering of the Northeastern Woodworkers Association, which claims to be the largest wood-working event in the US! I will speak about it a little more at the meeting next week.

The Vermont Wood Net is a coalition of hobbyist and professional woodworkers and wood product business with a mission to strengthen business opportunities and share resources. Fellow Chucks Bob Bouvier (chairman), Joe Laferriere, Dale Bergdahl, Dave Spooner, and yours truly are all directors of this great group.

At each meeting of the board of WoodNet I have attended so far I have heard praise of The Woodchuck Turners. Not only do they feel we are a well-organized club, but thanks to the tireless work of our editor, Army Spahn, they think we have a great newsletter! It is thanks to all the Chucks and their input, that we have a strong, growing, and admired organization.....keep it up everyone! And please, any time you see something that might be of interest for a meeting demo/talk, or an article for "Chatter", bring it to the attention of a board member. Thanks!

And speaking of demo's, (you have already received a separate mailing on this)....due to schedule "juggling", the sharpening "workshop" originally planned for February will be held this month instead. Our master

sharpening gurus Ralph Tursini and Bill Walsh have a great presentation lined up, and this is a "hand's on" demo where they will help you "tune up" your favorite tools. So bring in a few, both your good ones and a couple of retired ones to practice on. I can tell you from personal experience, the better you sharpen your tools, the better will be your turning results AND satisfaction from your efforts.

Since we do not have a December meeting, our gathering this month is our Holiday meeting. No need to wear your old Santa suit, but please do bring in a 'toy for a tot'! Although Fletcher Allen Hospital now has some different folks from previous years running the program, they still NEED toys of all kinds for their kids! Due to sanitation regulations, once a toy is given to a child to play with, it can not be given to any other, so there is a continuing need for replacements. It does not have to be a hand-made wooden toy, although that is great if you have time. Just a little store-bought one will be welcome too. It all helps!

A few weeks ago I received a note from Jim Ludwig of Tunbridge. He turns HUGE 3' x 5'!!...pieces and wants to attend our meeting to see what the Woodchucks are all about. I have sent him directions....hope he can make it!

Hope to see many of you on the Thursday November 20th!

Russ Fellows



From the Woodstock woodenware show. L-r: Jim Cunningham, Ted Fink, Janet Collins' dish.



Back on the board, Ralph & Craig



Ted bought a new tool which produces a fine texture much like gunstock checkering.



Getting set for the raffle. Books, wood, & tools.



Greg Drew & his walnut bowl



Example of the birdhouse ornament. The little bird is from a craft supplier.



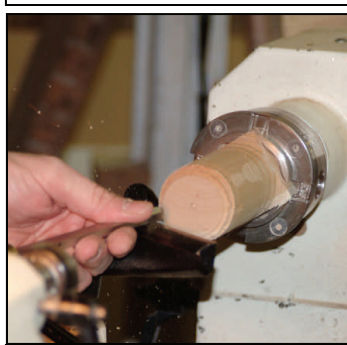
The bowl. Natural drying leaves walnut with beautiful, crisp color. Kiln drying muddies its color badly.



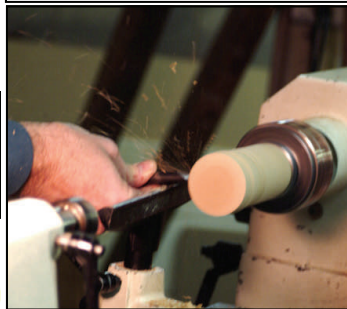
Ornament with lid off.



1. Turning a cylinder for the body. Cherry works well.



2. Putting a tenon on to reverse the piece for the bulk of the work.



3. The piece is reversed and turning the outside to a cup shape commences, using a small bowl gouge.



4. Drilling a hole to depth to begin hollowing out. This can be done using a chuck-held bit with lathe turned on. The tail stock is off for better access while hollowing.



5. Putting detail on the outside before hollowing.



6. Traditional hollowing technique.



7. Working on the lower tip of the bird house.

October Meeting continued.



8. The tip is shaped. Here's a little optional wire-burned decoration.



9. The piece is reversed onto the pin chuck and final detail work & sanding done on the body.



10. Starting to work on the top of the birdhouse. A block is attached using a modified screw chuck.



11. Working on the inside of the top. A recess is cut to the size of the body for a snug fit.



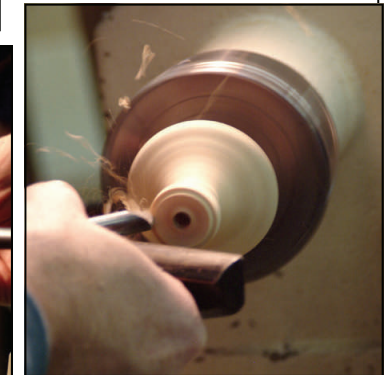
12. Here's the body jam-fitted to the top.



13. The top is reversed onto a pin chuck and its outside brought to shape.



14. Shaping the top.



15. Removing the hole for the screw chuck.



16. Finish the top & drill a small hole for the hanger.



17. An earring finding can be modified as a hook.



18. Finishing steps: Drill a nest hole & perch hole. Either turn a perch or use small dowelling. Sand parts separately, then Superglue together. Tie a ribbon onto the hanger, mount a teeny bird, and you are done.

Words From A Wise Woodchuck—dust removal

My dust collecting system consists of a 3-way split to the various machines. The first leg services the lathe, the second leg services a planer, edge sander, table saw, & bench router. The third leg services my jointer & chop saw.

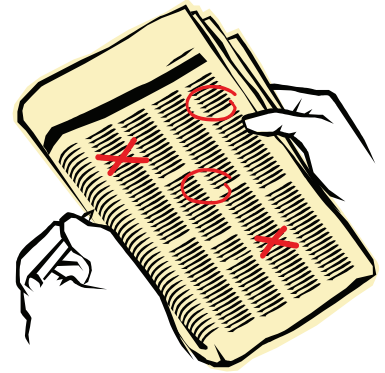
All machines have a waste gate which is closed until in use. There's a lot of pipe and many joints to the system. Because of all the joints, leakage is probably high, and suction at any machine always seems low. With the planer & jointer, heavy chips can clog the piping completely. I just installed 2 waste gates, one just after the leg to the lathe and one just after the leg to

the planer & table saw. I now have several times the suction at the lathe when the first gate is closed. When I close the second gate, the planer draws virtually all the chips from the planer. There shouldn't be any change on the third vacuum leg, but I'm happy with what I have. Gates cost from 5-8 dollars depending on where you get them. One of our "Chucks said he has only one hose which he takes to each machine as he uses it. He gets good suction and probably no increase in setup time.

Army

The Newsletter of Woodchuck Turners of Northern Vermont

Publisher:
Arny Spahn
1626 Hebard Hill Rd.
Randolph, VT
apspahn@comcast.net



Policy on AAW Liability Insurance

Members of WTNV who are giving public demonstrations are covered by the AAW-sponsored liability policy under the following conditions:

You must be a member of AAW and WTNV.

The event must be "sanctioned" by WTNV. That is, you must notify the Treasurer, who will provide a copy of the cover

sheet for the policy. You must also notify the editor of Chatter so you can be listed in Future Woodchuck Sightings.

The demonstration must have wood turning as the main subject.

Policy On Borrowing The Club Lathe and Tent

This is the policy which was formulated at the October 2004 Board meeting. It was first printed in the October 2004 Woodchuck Chatter.

The primary goal in buying these tools is to have good equipment available so we can demonstrate in public, thereby attracting new members and recruiting would-be turners.

All members in good standing (paid up dues) are eligible to bor-

row the equipment primarily for demonstration purposes. We may borrow the equipment for ONE WEEK at a time. The Treasurer is responsible for knowing where the equipment is at any time; therefore the borrower is responsible to sign the equipment out—by phone or in person— and back in.

The lathe and its parts are a unit. Don't ask to borrow only the chuck or other parts.

The borrower is responsible for transporting the equipment to and from its storage location. The

borrower is responsible for returning the equipment in excellent condition with all its parts intact.

The borrower is responsible for any liability rising from the use of the equipment.

Only club members may operate our lathe to avoid litigation by untrained turners.

The Chapter has first dibs on all equipment so that we can show our stuff at public events.