

Woodchuck Chatter

The Newsletter of Woodchuck Turners of Northern Vermont

An Affiliate of American Association of Woodturners

Website: WWW.WOODCHUCKSVT.org



April 11, 2020

Volume 18 Number 4



Virtual Meeting, April 21st

Inside this issue:

Woodchuck Board Info	2
Random Shots—Our Club	2
Treasurer's Report - Karen Drennen	3
Attention Woodchucks! Special Raffle	3
March Meeting Continued: Gary Walz	4
March Meeting Continued: Andy Duling	5
March Meeting Continued: Barry's Art & Harvies Bowls	6
More March Meeting	7
Making a Basket Bowl: Dave	8, 9, 10
Janet Collins: Workshop Tour	11
Shop Tour: Ted Lattrell	12
Skunk Hollow Report: Russ Fellows	13, 14
Resource Page	14
Classified Ads ; Items For	15
Want Ads	16
Call For Mentors	16
Liability Insurance	16
Upcoming Demos	16
Mentor List	16

This month, we open the ZOOM meeting at about 6:45 and get to know each other.

The ZOOM link will be coming to you soon. We are asking members to show us "Something you sell..." And,

any shop tours or other presentations will be welcome, also.

Virtual Meeting 3/17/21



President Jay Bailey called the Zoom meeting to order at 7 PM. There were 27 participants.

Russ Fellows expects to be back in early May. Hopefully, there will be a June Sawdust Session and an in-person club meeting.

Jay mentioned that there are gift certificates that the club needs to use for raffles that expire at the end of the year.

Show and Tell:

Gary Walz shared some of the things he uses other than his lathe. He showed how he dries his pen blanks and stabilizes the wood using a vacuum pot and toaster oven. He also casts resins using a pressure pot. He also showed his two lasers.

Harvie Porter showed several bowls turned from a maple burl.

Andy Duling showed some of the fishing lures he has made. He shared a video of

how he makes a lure.

Barry Genslinger showed multiple bowls on which he collaborated with an artist who painted them. The paint was then covered with polyurethane finish.

Janet Collins shared a PowerPoint presentation on the room she converted within the heated part of her house in order to do remote presentations.

Ted Lattrell shared a before and after slide show of his workshop.

Lucinda Love promoted the use of the Litratorch light, a USB rechargeable light she found helpful in the shop.

Brian Reed shared some photos of a segmented bowl he had made of several wood species.

Brad Blaisdell created a bowl of segmented sumac with resin filling the void. He also showed a turning of sugar sweet gum balls in a resin casting that was attached to a laminated piece of cherry.

Jim Holzschuh showed a large yarn bowl of cherry and an apple/ box elder stitch marker box.

Chris Bishop described his wood turning experience of listening, learning, and spending. He asked questions on finishing and members shared their favorite finishes.

(Continued on page 4)

Woodchuck Turners of Northern Vermont Board of Directors

President: and
Web Master
Jay Bailey
22 Cobble Hill Meadows
Barre, VT 05641
(802) 479-1458
tjaybailey@yahoo.com

Vice-President:
Dave Buchholz
5 Randolph Road
Keeseville, NY, 12944
518 834 9524
dbuchholz@northwestern.edu

Secretary: Harvie Porter
39 Randolph Ave.
Randolph, VT 05060
802-728-4265
weltradler@gmail.com

Treasurer: Karen Drennen
12 Winters Court
Swanton, VT 05488
kdll@myfairpoint.net
802 868 6161

Member-At-Large
Andrew Duling
2432 Ballard Rd.
Georgia, VT 05478
AEDuling@gmail.com
802 999 4491

Member-At-Large:
Bob Martin
36 Calais Rd.
Worcester, VT 05682
Phone: 802-223-7475
martrlm@yahoo.com

Member-At-large
Jeff Petter
83 Applewood Drive
Williston, VT 05495
jpetter@gmail.com
802 461 3583

Newsletter Editor:
Army Spahn
Reporter, Assistant Editor,
and Proof Reader:
Cil Spahn
89Tom Wicker Lane #229
Randolph CTR., VT 05061
Woodchuck5540@gmail.com
802-728-4799

This last year could have gone poorly for our club. We could not all gather in one place, so we did a hybrid meeting; several helping at Skunk Hollow, and many at home using ZOOM to take part.

Then the weather closed in and Russ's shop was not available in the late Fall and Winter months. That shop has been our most valuable physical resource for many years. Whenever it's warm enough to open the shop, Russ invites us for not only our meetings but also for "Sawdust Sessions", a more informal get together.

We had a crew; Russ, Karen, and Jay, man the audio-visual equipment during the hybrid meetings. Then, when we could have quit for the Winter, Jay kept us together by having a theme and perhaps a demo for each month, right through now.

It's true. We could have laid back and shut up shop. But how would the club have fared? How many folks would have been interested in rejoining if there was no meeting of any kind for 6 months of the year?

Thanks to the continued vitality of the Club, we now have **63** paid members. And, there are several long time members who have been slow in rejoining. We still have the room to grow.

So, we got a look at many of our members' work and this last month, some shop tours.

We really have a group of talented workers in our club. Janet and Russ have higher profiles than most of us, but look at all the fine work we have seen during our Show and Tell sessions! Many have specialties which I have tried; many of those are way beyond my skill level. I hope I have learned from them. Having all the vol-

umes of "Chatter" available to me, I can research and refine my work.

Vermont has been a great example in handling the pandemic. We have low rates of infections, hospitalizations, and deaths. We have a high rate of inoculations. Our Governor, Phil Scott, has put the brains of the state to work and "turned the spigot" both ways when needed. Now, he predicts that we will be almost entirely open by the 4th of July.

Russ thinks he will be back North about May 10th and open his shop soon after. That could mean we can gather there. But, the maximum crowd will still have to be small. So, good hybrid meetings will have to serve the overflow.

Probably, masks will still be a good idea and social distancing will be slackened.

So, what do we need to keep the club really vital? Start with these: An invested leadership. President, Secretary, and Treasurer for the monthly running of the club. Board members to set policy .

We need members willing to demonstrate their skills. As I have said, many of our members have refined skills and favorite products they can show us. Good content is key to good interest.

We need places we can gather in and do woodwork. And, if we are going to be available to more than can fit in a shop, we need a good AV setup and people who can run it.

Taking dues from members sort of promises them they will get their money's worth. We can do it.

Keep calm.

Wash your hands.

Army

April 2021 Treasurer's Report**Balance forward**

\$5277.45
 Dues \$275.00
 Raffle \$0.00
 Total Income \$275.00
 Mar '21 Zoom \$15.89
 Bank service charge \$3.00
 Hartford Insurance \$550.00
 Total expenses \$568.89
 Balance ending \$4983.56

Karen Drennen/Treasurer

Reminder: Unless you have paid your annual dues by April 1st your name must be removed from the discount list.

The Board of Directors of The Woodchuck Turners of Northern Vermont gratefully acknowledges the payment of dues from the following members for **2021**:

Jay Bailey, Ron Bauer, Wayne Beauchemin, Ted Beebe, Dale Bergdahl, Chris Bishop, Brad Blaisdell, Jodi Blaisdell, Robert Bouvier, Bill Breen, Dave Buch-

holz, James Bushey, Richard Butz, George Cacchio, Sal Chiarelli, Charles Cieri, Janet Collins, Mike Deweese, Brad Dinwiddie, Karen Drennen, Andy Duling, Tom Dunne, Argie Economou, Cheryl Ferry, David Ferry, Joe Fortin, Toby Fulwiler, Joe Gaines, Barry Genzlinger, Tom Gerner, Mike Glod, Tracy Gryger, Rick Hamilton, Damon Hartman, Linda Holingdale, Brad Jackson, Kevin Jenness, Eddie Krasnow, Ted Lattrell, Luc Lefebvre, Kevin Liddiard, Lucinda Love, Chris Lumbra, Bob Martin, Gerry Martin, Ross Mitchel, Kevin Murdough, Ted Nelson, William Nestork, Mickey Palmer, Mike Papin, Jeff Petter, Harvie Porter, Randy Ramsden, Brian Reed, John Reilly, Larry Rice, Barent Rogers, Sam Sander-son, Robert Schumacher, David Scrase, Edwards Smith, Arny Spahn, Cil Spahn, Marilyn Stolberg, Adam Wager, Gary Walz, Mike Washburn, Larry Waters, Bob Zelif (63)

(Scott Bennett, Russ Fellows, Ted Fink, Dick Montague, Michael Mode, Nick Rosato, Hav Smith and Al Stirt are Honorary Lifetime members, (8)

If you have paid your dues for the year but

do not see your name listed here please contact me to correct that error of omission.

KD11@myfairpoint.net

Dues for 2021 are \$25. Checks should be made out to "WTNV" and sent to: Karen Drennen, 12 Winters Court, Swanton VT 05488

Please note: The following privileges are only available to dues-paying members: Video library use, mentoring program, bulk purchase discounts such as CA glue and Anchor Seal (when available), Klingspor, Hartville Tool, & Penn State Industries discount lists, (to remain on the discount lists dues must be paid by April 1st each year). Mention the club to get your discount. PSI and Klingspor request you log in **before** you order anything to ensure your discount.

I will be leaving the Board as Treasurer this year. If you are interested give me a call!

ATTENTION WOODCHUCKS!!

We are having a fundraising raffle of the Franck Johannesen Norfolk Island Pine vessel he made in the remote demo he did for us for our October meeting. It is about 12 inches tall, and has a threaded lid of Bocote, and has a retail value of \$250. Tickets are \$3 each, four for \$10. Buy as many as you want! All the money collected will be added to the EOG grant money for the purchase of our new video equipment. Please let me know by email (russfellows@outlook.com) how many tickets you would like. The drawing will at our first post-covid in-person meeting, hopefully June! You can buy tickets right up to the drawing! When you order tickets, I will forward it to Karen and she will collect from everyone.

Thanks.....and good luck!

Russ

PS If, when you order tickets and you don't get an acknowledgment from me after a few days, write again. I get so many emails I often miss some, and I will keep my on the spam box as well.



(Continued from page 1)

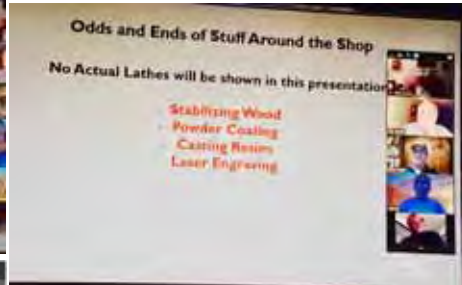
Dave Buchholz presented a slide show about how to make a basket bowl. Meeting adjourned at 9 PM.

Respectfully Submitted,

Harvie Porter, Secretary



Gary Walz told about various techniques.



(Continued on Page 5)



This is the kind of plug we are looking for.



Use the table saw to get a rough blank.



Chop the blank to about 5"



Mount the blank in a chuck & tail stock.



Start rounding to size..



Remove tailstock and form a cup on the end.



Form the plug body and sand to 600.



Use the bandsaw and Plexi to make a lip for the plug.



Drill for eyelets.



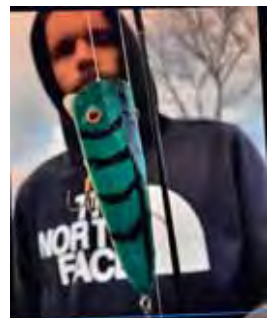
Paint it to look like fish.



Drill for a weight

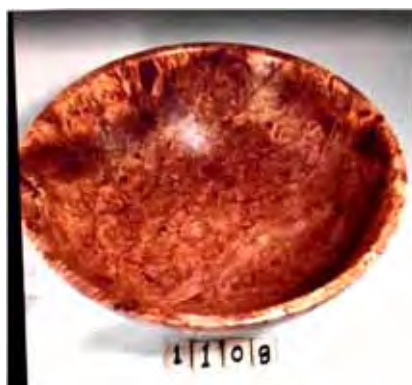


Install eyelets for hooks.





Harvie's Burl Bowls





Lucinda Love promoted the use of the Litratorch light, a USB rechargeable light she found helpful in the shop.



Brian Reed shared some photos of a segmented bowl he had made of several wood species.



Brad Blaisdell created a bowl of segmented sumac with resin filling the void. He also showed a turning of sugar sweet gum balls in a resin casting that was attached to a laminated piece of cherry.



Jim Holzschuh showed a large yarn bowl of cherry and an apple/ box elder stitch marker box.



Chris Bishop described his wood turning experience of listening, learning, and spending

Making a Basket Bowl

Inspired by American Woodturner Journal article
By Janine Wang, Oct. 2020

Dave Buchholz

Marking rim for spoke holes



- Bowl must be thick enough to drill holes for rattan reed
- Using #5 reed for spokes and #3 for weavers
- Bowl thickness is a little more than 5/16
- Mark center of rim while on lathe
- Used lathe and center punch to mark holes about 1" apart
- Bowl will go out of round while turning

Make a bowl



- Small rough turned bowl from coring large chunk of wood
- Jam chuck bowl with tail stock support
- Clean up tenon

After turning bowl



- Want reed to follow curve of bowl
- Rim should be perpendicular to bowl wall

Add finish to bowl



- Don't drill holes until after finish is applied
- Want reed to swell inside wood to lock it in place

Drill holes in rim



- Using 9/64" drill and masking tape for depth (about 3/8")
- This is for #5 reed
- Pinch wood to make sure I am not going through bowl wall
- Can feel heat and vibrations
- Tool rest is just wooden platform
- This is so drill is horizontal

Finish bottom



- Using Cole jaws and tail stock
- Small bowl gouge
- Sand bottom
- Laser engrave name, year, species, and insignia
- Add finish with vacuum chuck

Prepare #5 reed for spokes



- Using wire cutters
- Spokes are 5" long
- Enough for sides and braid at top, plus extra to pull on

Pushing spokes into holes



- Don't need glue
- Reed will swell when wet

All spokes in



(Continued on Page 9)

All spokes in



Coloring reed



- Using Jacquard fiber reactive dyes (tie Dye)
- Set color with soda ash in liquid
- Red, Blue, and Natural
- Bowl is inverted in bucket of water to swell spokes and lock them in the holes

Ready to start weaving



- Partially dry colored reeds to limit bleeding of colors
- Reeds are 12' long
- These are 83 weavers

Starting with 3 reeds



- Anchor reeds with left hand
- Will go over 2 and under 1

After a few weaves, the reed is locked in place



Reed gets twisted and periodically stop and straighten out

Starting on first row



- The reeds are from 5 to 12 feet long
- Left hand holds reed down to keep in tight
- Reed shrinks radially but not longitudinally

Starting bend in weave



- Want basket weave to bend inward, following curve of bowl
- Left hand bends spokes inward and keeps weave tight

Weave done



- Last weave is not done quite the same
- Next is braiding the tall spokes

Wet the spokes to make them pliable



Water level is just up to top of weave of inverted bowl

Start top braid



- Bend spokes carefully so don't crack them
- They weave in then out

(Continued on Page 10)

Using Awl to force last spoke in



Now bend spoke around 2 and back inside



Top braid done



- After reed dries, trim ends close to braid
- Also trim any weaver ends
- Finish with spray spar varnish



All done!



Entering the shop. The room is about 14'x16' and it faces west giving wonderful light in the afternoon.



My dog Lady's favorite spot when the woodstove is going.



Power carving and woodburning area and the place that get's cluttered with all kinds of things.



Close up of Zoom setup



Woodturning area



Dust Extraction and Disc Sander, one of the best investments I have made.



Carving toolbox that I made in 1996 when I was a student at North Bennet Street School.



Storage behind the lathe



Two mahogany chests of drawers I have been working on



Curly Maple bookcase I made about 20 years ago, holding all my woodworking and woodturning books.



Plenty of wood to turn



Storage, hand tool toolchest, box of clamps and some picture frames I am working on.



Windsor Footstool made for the AAW article I wrote in April 2016



Looking west



The big girl shop



For work, I had to learn how to teach woodworking online. Not so easy to do.



Desk/Office area. The desk is one I made several years ago using the wood from a walnut tree I had to cut down on my property in Massachusetts almost 30 years ago.





Before reconstruction: dark and crowded.



After: Wallboard & lights brighten it up.



Lots of storage. Some machines on sliders to clear floor space for others.



Built the cabinetry himself. Good storage for hand tools and product.



It was three above zero the morning I FINALLY left Skunk Hollow in mid March, and I was feeling quite “validated”, in that even though it was several months later than my usual escape, I was indeed getting away from the cold. Two days later, as I was making my way through the Carolinas, I checked Weatherbug on my phone and discovered that the cold in the north had broken and it was actually warmer in Burlington than Savannah! Oh well! I was still happy to be getting to my home in Florida and enjoy some of the nicest months of a southern springtime. I also knew that the warm spell in Vermont would not last!

Even all through the pandemic, my club in Florida (<https://www.sarasotawoodturners.com/>) has held,



when needed, its Tuesday morning woodchucking sessions. The log yard is large and breezy enough to be able to have gatherings safely, and by the time I had arrived, everyone had gotten vaccinated and was feeling relaxed about being out. As I have said in the past when talking about our Florida woods, we never know what we will be getting for tree species to buck up. It all depends on what the landscapers and builders are doing, but there is usually an interesting assortment. When I got there I found piles of China berry (https://en.m.wikipedia.org/wiki/Melia_azedarach), podocarpus, (<https://www.south-florida-plant-guide.com/podocarpus-tree.html>), sea grape (<https://homeguides.sfgate.com/care-seagrape-tree-55427.html>), Chinese elm (<https://gardeningolutions.ifas.ufl.edu/plants/trees->

[and-shrubs/trees/chinese-elm.html](https://en.m.wikipedia.org/wiki/Araucaria_heterophylla)), and the usual Norfolk Island Pine (https://en.m.wikipedia.org/wiki/Araucaria_heterophylla).



One of the perk's of working with the Tuesday crew is that we get to take home a little free wood to play with. Because they were new to me I threw some sea grape, and Chinese elm in my truck. I will focus here on the elm. As can be seen in the pictures below, it is very gnarly looking. The hollow core of the butt log suggests that it was diseased, so I don't know if the bark is normally so roughly textured? Because of this, I decided to start with a natural edge bowl. Seen in two pix below, I have spritzed it with water to highlight the grain. I also sprayed the crotch piece, which promises to have some great figure. In the pieces sitting on the dolly, you can see the worm holes, which very likely are a clue as to why the tree was taken down and given to us! I plan to turn a shallow bowl out of the wider piece. Who knows what I will find inside!? In my column next month I will show the results, and talk a little about the other species. Maybe by then we will have a few more to play with as well!

One of my missions down here this year is to do some research on the video equipment we plan to buy back home with our grant money. Last Tuesday we zoomed a demo to our members and I was there as a student/assistant to the regular IT crew. We will be doing another



er one on the first Tuesday in May, and I will again observe. The cameras are very simple to operate, but it is the managing both audio and video input that has the learning curve. There



are many good software programs available to do this, and this is the challenge for me. We are hoping to return to in-person meetings in a couple months, but will still be Zooming programs to members.

I plan to head back north about May 10. Watch for notices about when gatherings in

- 1) Lathrop Maple Supply, Hewitt Rd, Bristol, Vermont, 802-453-2897. With a newly expanded inventory area, Tom has a fantastic supply of local and imported wood. His new division, "Exclusively Vermont, LLC, specializes in high quality Vermont lumber and mill products and FSC stock is available.
- 2) Hayley Wood Products in Colchester. (<http://www.hayleywoodproducts.com/>).
- 3) Sutherland Welles Ltd., No. Hyde Park, VT, 800-322-1245. (www.sutherlandwelles.com). Right here in our own back yard, they make the best Tung oil products in the U S. Call with an order and it goes out the same day!
- 4) Johnson Lumber, Route 116 in Bristol, VT. 802-453-4884. Another good "local" source for hardwood lumber of all kinds.
- 5) www.exoticwoodsusa.com. They offer a 15% discount to any member of an AAW chapter. Type in 'exoticwoodsusaaw' in the coupon code box.
- 6) Griffin Exotic Woods These folks came up in a search for something else, and I ended up buying a couple things from them. Their prices were fair and the service was good. <http://www.exoticwood.biz/>
- 7) Sinclair Mill Works in North Danville VT <http://www.sinclairmillworks.com/home.htm>. 802-748-0948. He specializes in figure Vermont species. His prices are very reasonable.
- 8) Mike Jackofsky—hollowing tools. www.mikejackofsky.com. Also sells thru Craft Supply.
- 9) Business cards and other printed goods: Vistaprint.com
- 10) Laser engraving—Maple Land Mark Woodcraft. 800-421-4223 They are in Middlebury. www.maplelandmark.com
- 11) Les Dougherty & Susan Curington Owners, North Woods Figured Wood North Woods,. LLC PO Box 808 Forest Grove OR 97116 [800-556-3106](tel:800-556-3106), [503-357-9953](tel:503-357-9953) www.nwfiguredwoods.com offers lifetime 15% discount on any website wood purchase. Use "WOODTURNERS" coupon code at checkout. www.nwfiguredwoods.com
- 12) Paw Prints Printing WWW.paw-prints.com 802 865 2872 Gregory Drive South Burlington, VT 05403
- 13) Your NEW colored plywood source. trethaway@comcast.net. Has scraps of colored plywood for resale. Listed on eBay as scratch10to12. *(That's an email address. Try it.)*
- 14) The Tree House, hardwoods & mill shop. Native woods, priced from \$5.00. 1891 Williston Rd., 802-497-3530. www.treehousehardwoods.com
- 15) Suffolk Saw of New England, Jeff & Danielle Mellott; 33 Gaudet Dr., Belmont, NH, 03220 877-550-7297

Skunk Hollow might start up again! My best to all!

Russ Fellows
Sarasota, Florida
(Russfellows@outlook.com)
802-343-0393



Classified Ads: Items For Sale



Pen storage and display case, solid cherry, 5 drawer case with finger joinery. Each Drawer has solid brass pull knob and 9 pen capacity (total 45 pens).
Weight. 14 lbs. 11" X 11" X 8.5"
\$75.00, Contact Ted Fink 802 985 2923
tjfturnings@gmail.com

I have a lathe for sale! All the information is on the craigslist ad here: <https://vermont.craigslist.org/tls/d/williston-wood-lathe/7146512631.html>

Jeff Petter

Used Equipment For Sale—Randy Ramsden

Veritas Cyclone Lid

Not offered in clear anymore that is so much handier. 4" inlet / outlet fits on 33 gal or larger barrel.

Works great / has protective plastic still covering it - \$20



For sale: Powermatic Model 45 lathe. An old green series lathe, this was my first lathe that I used for about 15 years until I got the Oneway. I sold it to a friend, who used it for a few years, but has lost interest in turning. It is located in Burlington. \$750. Give me a call for more info, or if you'd like to see it? Russ Fellows, 802-343-0393.



I have a MicroPro by MasterCarver for sale. I purchased this unit last Fall and never used it. I purchased it from Packard Woodworking Supply. Here is the link to the page <https://www.packardwoodworks.com/309330.html>

I paid 199.95 for it and would like to get \$150.00 for it. I can probably deliver it also if the buyer is not too far. Here is a picture of it. If anyone has questions they can email me or call 802-584-4341. Thanks.

From: Janet Collins
[<curlyacer@gmail.com>](mailto:curlyacer@gmail.com)

Want Ads
Mentors Wanted
Share your Skills

Beginning wood turner looking for his first lathe. Would consider most anything except for reeves drive style variable speed. Belt change models are fine. Any leads greatly appreciated. Randy - rramsden@gmavt.net

Woodchuck Mentors

These Woodchucks are able and willing to help other Woodchucks wanting some hands-on instruction.

Dick Montague: General turning, all aspects plus tool sharpening. 802-584-3486 Montagueturn@gmail.com Groton

Russ Fellows: General, segmented, & multi-axis turning 802-899-3059 skunkmen@gmail.com Jericho

Ted Beebe: Segmented work. 802-849-2436 Teddy.beebe@gmail.com Fletcher

Tom Dunne: Hollow turning, etc. 802-388-6981 jthomasdunne@gmail.com Middlebury

Brad Dinwiddie: General turning, peppermills, utensils, pens 802-275-7185 brad@frogpondwoodturning.com Underhill

Dave Buchholz
General turning; advanced embellishments
518 834 9524
dbuchholz@northwestern.edu
Keeseville, NY

In House Demos:

All demos and dates are tentative until they appear on Page 1 of the newsletter.

April 21st—Members show "Something They Sell."

May 19th—Barry Genzlinger—Tap Handles

June 16th –Russ is back and will have new stuff for us. Perhaps we will be back at Skunk Hollow?

Instructors For Hire

Nick Rosato
802-999-2976
nickrosato@gmail.com

Once and twice turned bowls
Coring with the Oneway Coring system
Understanding and using gouges
Spindle turning and duplication
Hollow Turning
One-on-one instruction at my shop or your shop. Flexible scheduling. \$250 half day. \$400 full day.

WTNV Liability Insurance

Liability Insurance Policy

As of April 2013 we are covered by a liability policy with the following limits:
Each occurrence: 2M; Damage to rented premises: 1M; Med expenses: 10K;
Personal injury: 2M; General aggregate: 4M;
Products aggregate: 4M.

The Hartford; Agent; Michael George: (317) 735 4072; mgeorge@amj_ins.com
This policy covers all members at all WTNV events.
If you are demonstrating, this policy will not cover any claim if you are being compensated either by commission or sale of your turnings. In other words, this does not