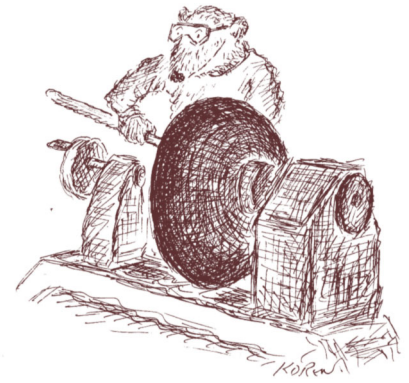


# Woodchuck Chatter

The Newsletter of Woodchuck Turners of Northern Vermont

An Affiliate of American Association of Woodturners

Website: [WWW.WOODCHUCKSVT.org](http://WWW.WOODCHUCKSVT.org)



March 10th, 2020

Volume 17, Number 3

## Meeting March 18th at CVU

### Inside this issue:

Woodchuck Board Info	2
Random Shots—Some reading & tips	2
Treasurer's Report -Karen Drennen	3
Letter From Jim Holzschuh	3
February Meeting continued	4-7
Brad Turns Peppermills	8-10
New method for Drying Wood—Russ Fellows	11-12
Resource Page	13
Want Ads	14
Call For Mentors	14
Liability Insurance	14
Upcoming Demos	14
Mentor List	14

Directions to CVU: From the NW, exit I-89 at Exit 14 (Burlington) and head east on Williston Rd. (Rte. 2) for 1.2 miles. Turn right onto Hinesburg Rd (Rte. 116). Proceed 9.7 miles to CVU Rd., turn left at the light and CVU will be on you left at 0.4 miles. From the East: Exit I-89 at exit 12 ( Williston/Essex) Turn left onto Rte. 2A (St George Rd.) and proceed 5.0 miles. Turn left onto Rte. 116 and proceed 2.1 miles to CVU Rd. Turn left, school is 0.4 miles on left. After turning onto driveway, take immediate left. Park near the flagpole. Go in the main doors there. There will be signs guiding you to the class-

room.

Scheduled is a Remote Demo with Mike Mahoney. We will do that in one of the classrooms.

**NOTE:** Anchorseal will be available on request. Harvie can be contacted at 802-728-465 or [weltradrler@gmail.com](mailto:weltradrler@gmail.com) before the meeting date to let him know to bring the Anchorseal to the meeting.

Thanks, Harvie

## February 19th Meeting at CVU—Harvie Porter

Vice-president Dave Buchholtz called the meeting to order at 7 PM.

Announcements:

The Totally Turning Symposium will be March 28<sup>th</sup> and 29<sup>th</sup> in Saratoga Springs City Center, NY. There will be more than a dozen well known turners making presentations.

At the March 18<sup>th</sup> meeting, there will be a remote presentation by Mike Mahoney.

There will be a Board Meeting April 8<sup>th</sup> in Randolph Center. As

always, members are welcome and suggestions for presentations are appreciated.

Congratulations went to Army Spahn for another fine issue of *Chatter*.

Beginning in May, the first Wednesday of the month will again be the time for sawdust sessions at Russ Fellows'.

The raffle was held with 16 participants.

(Continued on page 4)

### Woodchuck Turners of Northern Vermont Board of Directors

President: and  
Web Master  
Jay Bailey  
22 Cobble Hill Meadows  
Barre, VT 05641  
(802) 479-1458  
[jtaybailey@yahoo.com](mailto:jtaybailey@yahoo.com)

Vice-President:  
Dave Buchholz  
5 Randolph Road  
Keeseville, NY, 12944  
518 834 9524  
[dbuchholz@northwestern.edu](mailto:dbuchholz@northwestern.edu)

Secretary: Harvie Porter  
39 Randolph Ave.  
Randolph, VT 05060  
802-728-4265  
[weltradler@gmail.com](mailto:weltradler@gmail.com)

Treasurer: Karen Drennen  
12 Winters Court  
Swanton, VT 05488  
[kdu@myfairpoint.net](mailto:kdu@myfairpoint.net)  
802 868 6161

Member-At-Large  
Andrew Duling  
2432 Ballard Rd.  
Georgia, VT 05478  
[AEDuling@gmail.com](mailto:AEDuling@gmail.com)  
802 999 4491

Member-At-Large:  
Bob Martin  
36 Calais Rd.  
Worcester, VT 05682  
Phone: 802-223-7475  
[martrlm@yahoo.com](mailto:martrlm@yahoo.com)

Member-At-large &  
Newsletter Editor:  
Arny Spahn  
Reporter, Assistant Editor,  
and Proof Reader:  
Cil Spahn  
89 Tom Wicker Lane #229  
Randolph CTR., VT 05061  
802-728-4799  
[apspahn@comcast.net](mailto:apspahn@comcast.net)

I still get some woodworking magazines, and read just what interests me. If I'm not going to build boxes, I ignore "how to refine your dovetails." So one of the good tips I picked up was this: Get a wad of waxpaper from the kitchen. Use it with some pressure on any iron or aluminum surface. It will give a nice, smooth surface to slide tools or wood on.

Another neat tip concerns using a planer. If you need to plane down stock to less than 1/2 inch, find some plywood or equivalent to fit the bed of your planer, long enough to cover both the in and out feed shelves. Fasten a stop-block under the infeed side. This allows you to tune the board thickness to below the cutting height of the planer. Thin boards are good for inlays on turnings and many other uses.

I just ran across an ad for a video featuring Janet Collins, sponsored by Fine Woodworking Magazine. Basically it's a conversation with Janet and another turner about the craft. It's an hour long, with over 2 minutes of other talk at the beginning. Cut and paste this into your browser:

<https://www.youtube.com/watch?v=ID-sZoWfgw&feature=youtu.be>

Going on with tips: When I do any kind of spindle turning, from pens to pepper mills, I like to cut the corners off to reduce turning time and avoid any huge tear-outs from endgrain.

I set my bandsaw to 45 degrees and slide the wood through, one corner at a time. Watch your fingers! When the end of the blank is an irregular octagon, it's much faster to take it down to round.

Sanding: Klingspor has a wide variety of abrasive materials. For my turning, I use only 2 types—hook & loop round pads on an oscillating, random-orbit sander. I currently use Abranet-type pads. They don't clog as easily as other, paper-backed types and a tap on the table cleans them out. For my pen turning, I bought the multi-strip dispenser from Penn State. It goes up to 800-grit and when I need finer paper, I use strips cut from sheets I got from Klingspor.

When I rarely do flat work, it's with a quarter-sheet sander with Klingspor paper.

Enough from the shop. Today, I'm looking

out my window at the Braintree Hills. The field in front of me is still snow covered and an occasional snowmobile still runs past. Come spring, the far end of the field will not be mowed. The center section will be hayed by VTC. It's big enough it will take 3 days to clear it all with their mid-sized machinery.

Nearest us, owned by Morgan Orchards, is a section which will be left wild through most of the summer. It will be posted as a Bird and Butterfly Sanctuary. The posting, we hope, will stop the grumbling by our neighbors about our unkempt field. We have many nesting birds we want to keep close by in the grass. There's also hope that butterflies, specifically Monarchs will come visit. Being left wild, there will not be any spraying. It will be safe for bees and other critters. Several of us spend a good part of the day watching that field. We also have land for walking and gardening. The average age here is well above 70, but most of us are vigorous and capable of lots of adventures. But you ought to see the parking lot of walkers when we sit down for our social hour in the afternoon!

Having these pleasant surroundings makes it easy for me to relax and do good work in the shop. Contrariwise, after a hard day's work, having a shop and an alternate activity does let one lay back and enjoy the sawdust.

On April 8th, some of you will have the opportunity to come to Morgan Orchards for the semi-annual Board meeting. They serve a very good meal here. You will see part of what makes life good for Cil and me.

Our plan is to gather in the upstairs lounge and go down to dinner at about 6:00 PM, with the Board meeting to follow.

Coming down from the Burlington area, take I-89 to Exit 4. Turn left, uphill, and go about 1/2 mile to the Morgan Orchards sign. Turn in, go up to the stop sign and turn left. Park anywhere and come in the front door.

Members who wish to attend the Board meeting are welcome. *Please let us know you are attending, at the March meeting, so we can get your meal ticket.* The meal charge is only \$15.00 and you get a real good one for that price.

Army

**Balance forward**

\$4237.37  
 Dues \$225.00  
 Raffle \$34 .00  
 CA glue \$25.00  
 Sawdust Donations \$0.00  
 T shirts \$6.00  
 Total Income \$290.00  
 Total expenses \$0.00  
 Balance ending \$4527.37  
 Karen Drennen/Treasurer

*Reminder: Unless you have paid your annual dues by April 1st your name must be removed from the discount list.*

The Board of Directors of The Woodchuck Turners of Northern Vermont gratefully acknowledges the payment of dues from the following members for 2020:

Ted Beebe, Dale Bergdahl, Jay Brunault, Tom Brunault, Dave Buchholz, Mike Deweese, Brad Dinwiddie, Karen Drennen, Greg Drew, Andy Duling, Joe Fortin, Joe Gaines, George Gibson, Mike Glod,

Rick Hamilton, Brad Jackson, Eddie Krasnow, Luc Lefebvre, Chris Lumbra, Bob Martin, Kevin Murdough, Ted Nelson, Jeff Petter, Harvie Porter, Randy Ramsden, Brian Reed, Edwards Smith, Army Spahn, Cil Spahn, Marilyn Stolberg (30)

(Scott Bennett, Russ Fellows, Ted Fink, Dick Montague, Michael Mode, Nick Rosato, Hav Smith and Al Stirt are Honorary Lifetime members, (8)

If you have paid your dues for the year but do not see your name listed here please contact me to correct that error of omission.

[KD11@myfairpoint.net](mailto:KD11@myfairpoint.net)

Dues for 2020 are \$25. Checks should be made out to "WTNV" and sent to: Karen Drennen, 12 Winters Court, Swanton VT 05488

Please note: The following privileges are only available to dues-paying members: Video library use, mentoring pro-

gram ,bulk purchase discounts such as CA glue and Anchor Seal, Klingspor and Hartville Tool discount lists, **(to remain on the discount lists dues must be paid by April 1<sup>st</sup> each year). Mention the club to get your discount.**

New Member: Jeff Petter  
 83 Applewood Lane  
 Williston VT 05495  
 802-461-3583  
[jkpetter@gmail.com](mailto:jkpetter@gmail.com)

**I have CA glue! If you need any, contact me!**

Reminder: We have a wonderful opportunity to receive \$300.00 in gift certificates for raffles if we order \$1500.00 in orders from Woodturners Wonders. They would ship for free (unless grinders are ordered). They have available: CBN wheels, Rikon grinders, sanding products, lamps, hand hones, and more. Check out what they have at: [WoodTurnersWonders.com](http://WoodTurnersWonders.com). Several club members have purchased from them and are very satisfied (I am one of them!). CBN wheels come in the following grits:60, 80, 180, 220, 350, 600, & 1000. You need to know what size your wheel is: 6, 7, or 8 and what size arbor: 5/8 inch, 3/4, or 1/2. **This offer has a deadline of April 1st! Contact Karen before then!**

### *Jim Holzschuh Writes!*

March 18th is the day after my hip replacement surgery so I doubt I will be going anywhere - except maybe home from the hospital - give my best to all who are there.

Fellow wood turners take note - this year will be the 10th annual Trunk Show at the Grand Isle Art Works gallery in Grand Isle. A trunk show is an event in which vendors present merchandise (sometimes new work) directly to customers at a retail location or another venue. In recent years we have had approximately 35 to 40 artists set up on the grounds of the gallery for the weekend. Like previous years, there will be a large tent where we will have space for up to 8 woodworkers to demonstrate their craft and sell their artwork. Additional woodworkers are always invited to set up under their own individual 10x10 pop-up tents and join the festivities. If you have not been to the gallery you will find that we have plenty of parking space for visitors and outside vendors alike, approximately 75 Vermont artists' work in the gallery and a small on-site cafe. As Ellen and I raise fiber animals we also have some of our Angora goats at the gallery during the summer which has proven to be a draw for potential customers.

This year the Trunk Show will be on the last weekend in July, 25 and 26. There is a \$25.00 fee to reserve a space which will be returned to the artist at the end of the weekend. During the weekend you keep track of your sales and pay 20% to the gallery at the end. You can sign up on-line at <http://grandisleartworks.com/trunk-show-and-sale/trunk-show-call-to-artists/> or you can also print out an application from a link at the bottom of that page. Consider coming to the Islands for the weekend.



Dave Buchholz lead the meeting this month. Did well.



Harvie helped set up the video, which was very helpful for the demo.



Good selection of raffle prizes

(Continued from page 1)

Show and Tell: Edwards Smith showed some pieces crafted of “unfavored” wood. The first two were vases of cedar. One was a bread tray formed from a large piece of sumac. He also showed bowls of red oak and ash. The last was a bowl of box alder with a tung oil finish. Gary Walz showed pens formed using resins to stabilize and color the wood.

Andy Duling showed two bowls, one of ash and one of elm. Randy Ramsden showed his Wagner texturing tool and an ornament that had been textured using the tool. Dave Buchholtz showed a mini Sorby texturing tool and a home made tool for spinning carbide bits against the wood. Bob Martin showed several designs

of jam chucks he has made, a chisel for which he made a handle, and a piece of driftwood mounted on part of a Longworth chuck. Dave Buchholtz also showed a bi-cylinder made of wood and one printed in plastic.

Meeting then adjourned for Brad Dinwiddie's demonstration of turning pepper mills.

Respectfully submitted,

Harvie Porter, Secretary

(continued on Page 5)



Edwards Smith showed several pieces made from unlikely species.



A remarkably large piece from Sumac.



Gary Walz uses resins for some of his pens.



(continued on Page 6)



Andy showed fine bowls.

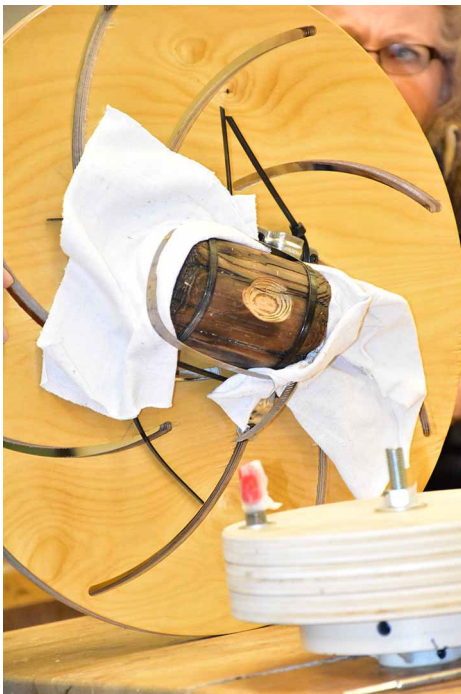


Randy uses this texturing tool (top) to produce some of his birdhouse ornaments.



Dave's Sorby texturing tool. Very versatile.

(Continued on Page 7)



Bob Martin showed a variety of holding devices. Here, he's got a grip on a chunk of Burl.



Brad Blasdell made a pitch for members to bring in projects suitable to aid his demo in April. Brad is going to go over some of the opportunities of thick-casting resins for woodturners.



Brad showed a variety of styles and sizes.



Brad gets his peppermill kits from Chef Specialties. He uses aceramic-type for salt grinders as the salt would corrode the stainless steel over time.



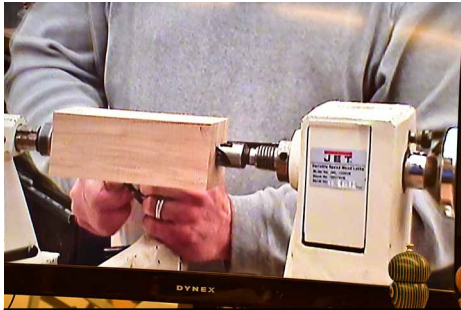
This is a typical 6" shaft . The Chef Specialties mills go up to 12".



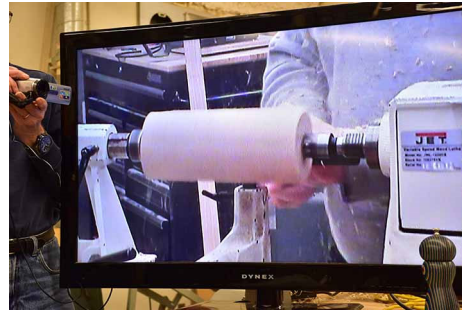
This is one of the finishes Brad uses.

*(Continued on Page 9)*





Brad mounts a blank between centers on the lathe. Its length is minimum the length of the finished mill plus about 2".



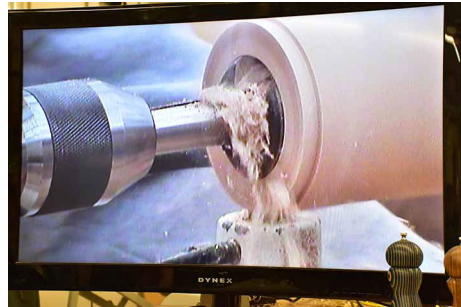
The blank is turned round with a roughing gouge.



The blank is divided into the top, the top of the bottom, and the bottom length. A tenon is turned on each end to fit a 4-jawed chuck.



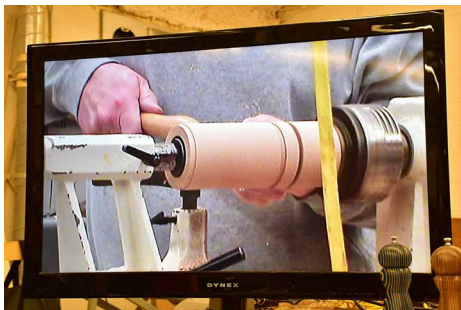
A (roughly) 1/4" hole is drilled through the top and into the bottom part.



Turn the blank on the lathe and drill with Forstner bit to take the base parts of the mill—usually 1-5/8 or 1-3/4"



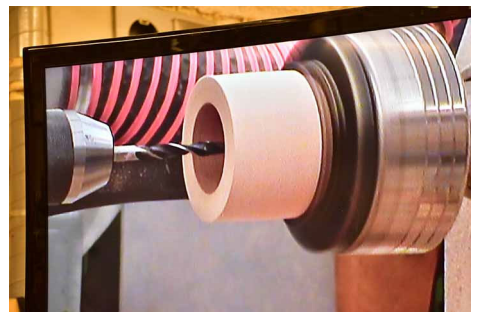
Next, using a 1-1/16" bit, drill about half-way through the blank.



Start shaping the bottom of the blank. A 60-degree live center stabilizes the tail end.

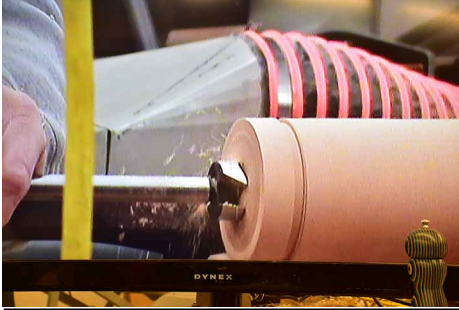


The Chef Specialties unit puts the nut which turns the shaft up into a recess in the top.



Here is the top drilled and ready to be shaped with the bottom.

(continued on Page 10)



Brad is drilling the through-hole through the top of the bottom. It will line up well.



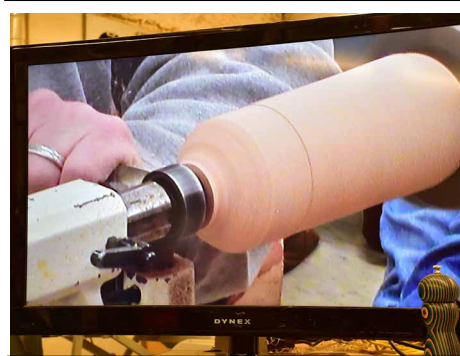
Turning the top of the bottom to fit into the recess in the top. Go slow and try many times. You want a frictionless tight fit when done.



The top is friction-fit to the bottom so the finish shape is flowing between the 2 pieces.



This is the chuck Brad uses to allow for tool work the full length of the peppermill.



Starting to shape the top.



Flowing the cuts into the bottom part.



Measuring the placement of the character lines.



Sanding the final shape. Finish will be applied and then the mechanism screwed into the body.

### “DRYING BOWLS A NEW QUICK WAY??”

A recent visitor to our club came armed with some new and potentially very exciting information. It was about a new and very quick way to dry a green wood turning in a matter of a few days, rather than the weeks or months that we were accustomed to previously. They are silica beads called ‘Dry & Dry’. (<https://dryndry.com/>). This is the same stuff we are all familiar with in packet form inside of many products used to absorb moisture, but just applied on a larger scale. The visitor came with some compelling evidence, namely a large bowl he had turned from green to finished product in under a week. We decided to give it a try!

Ordered directly from the manufacturer, our beads arrived in a few days! We chose two types, white beads for maximum absorption, and the blue for moisture monitoring. They will turn pink when saturated (photo #1519). Both can be dried in an oven and reused. Very encouraged, we tried drying several small pieces and they did indeed go from green to 8-10% moisture in a few days, and with minimal distortion or cracking. The next trial was a little less satisfying! An end grain piece of box elder was tried and after a couple days a large crack appeared from the base to the rim. See photo # 1503. Preliminary conclusion, the thinner sidewall dried faster than the heavier base and the resulting stress caused it to crack.

**Trial number two:** an end grain slab of rosewood about an inch in thickness (photo #1480) was put in a plastic bag with beads on both top and bottom. Because the piece had already partially dried to about 15% from atmospheric exposure, there was less drying to be done. After three days, 12% moisture was observed on the topside, and an average of 10% moisture observed on the bottom side. By day 5 the top side was still about 12%, the underside varied from 4% to 10%. Conclusion, the beads generally did the job, but the results varied due to slight variations in the thickness of the slab, and changes in ambient atmospheric humidity. The tests were conducted in a garage where the humidity changed according to what was happening outdoors. For comparison, another similar slab was put in a large paper bag without any beads, and after five days, it had stabilized at 10-12% on both sides.



1519



1503



1480

(Continued on Page 12)

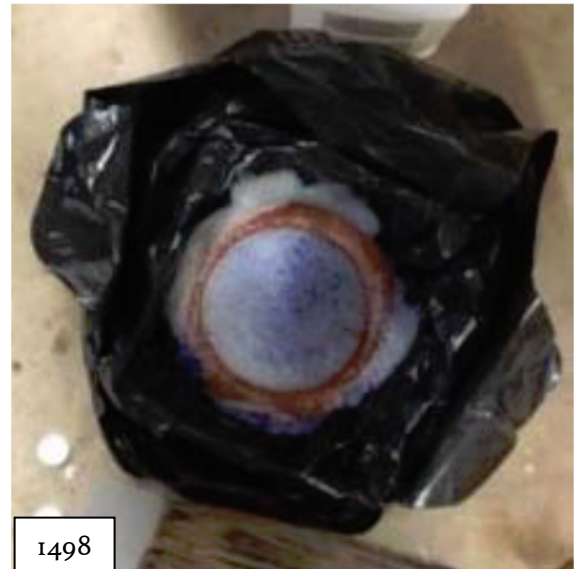
**Trial number three:** A log of very fresh bottle brush tree about 10-11 in. in diameter. The piece was cut in half, and over 35% moisture (photo #1488) was noted in the center. One half was turned into a natural edge bowl to a finish thickness of just over 3/8 inch. One week later 26-28% was noted around the tenon, the side grain area of the walls were about 18%, but the end grain “wings” were below 10%! The other half was cored, then turned to 3/4 in. sidewall thickness at the rim, slightly thinner at the base. After three days in the beads (photo #1498), readings varied between 18-22%, depending on thickness. After five days all readings had dropped into the mid teens, except for the very top of the rim, which was down to 8-10%! The tenon had distorted and there were dimensional changes in the rim, but no cracking. After three more days all readings had dropped a little more. Because we were using a pinless moisture meter, readings on the concave inner surfaces were not reliable. The coring was put in a bag without beads and one week later had dropped to 12-14%, with considerable distortion and a couple small cracks on the end-grain portions of the rim.

**Conclusions:** “Dry & Dry” silica beads can be a very effective tool to speed up drying times. The caveats - beads must be in direct contact with the surface to be dried, and even though the piece may be in a tightly closed container, the beads will not pull moisture from a piece without directly touching the wood. Thicker parts of a piece should be dried before thinner parts. The end grain of a piece will release moisture much quicker than side grain, as in conventional drying. Because only the very outer surface of the wood is dried by contact with the beads, when the beads are removed, both the remaining inner moisture of the wood and ambient air humidity will influence overall moisture in the piece. A pin meter is more accurate than a pinless meter, and on a concave surface a pinless meter will not work. Different species of wood will react differently to contact with the beads. Worthwhile? Yes! As long as you don’t ask the beads to do too much, and appropriate cautions are observed. (Although they do not come with toxicity warnings, we have decided not to dry the beads in an appliance that also is used for food. A separate toaster oven is used for this.)

Russ Fellows



1488



1498



1497

- 1) Lathrop Maple Supply, Hewitt Rd, Bristol, Vermont, 802-453-2897. With a newly expanded inventory area, Tom has a fantastic supply of local and imported wood. His new division, "Exclusively Vermont, LLC, specializes in high quality Vermont lumber and mill products and FSC stock is available.
- 2) Hayley Wood Products in Colchester. (<http://www.hayleywoodproducts.com/>).
- 3) Sutherland Welles Ltd., No. Hyde Park, VT, 800-322-1245. ([www.sutherlandwelles.com](http://www.sutherlandwelles.com)). Right here in our own back yard, they make the best Tung oil products in the U S. Call with an order and it goes out the same day!
- 4) Johnson Lumber, Route 116 in Bristol, VT. 802-453-4884. Another good "local" source for hardwood lumber of all kinds.
- 5) [www.exoticwoodsusa.com](http://www.exoticwoodsusa.com). They offer a 15% discount to any member of an AAW chapter. Type in 'exoticwoodsusaaw' in the coupon code box.
- 6) Griffin Exotic Woods These folks came up in a search for something else, and I ended up buying a couple things from them. Their prices were fair and the service was good. <http://www.exoticwood.biz/>
- 7) Sinclair Mill Works in North Danville VT <http://www.sinclairmillworks.com/home.htm>. 802-748-0948. He specializes in figure Vermont species. His prices are very reasonable.
- 8) Mike Jackofsky—hollowing tools. [www.mikejackofsky.com](http://www.mikejackofsky.com). Also sells thru Craft Supply.
- 9) Business cards and other printed goods: [Vistaprint.com](http://Vistaprint.com)
- 10) Laser engraving—Maple Land Mark Woodcraft. 800-421-4223 They are in Middlebury. [www.maplelandmark.com](http://www.maplelandmark.com)
- 11) Les Dougherty & Susan Curington Owners, North Woods Figured Wood North Woods,, LLC PO Box 808 Forest Grove OR 97116 [800-556-3106](tel:800-556-3106), [503-357-9953](tel:503-357-9953) [www.nwfiguredwoods.com](http://www.nwfiguredwoods.com) offers lifetime 15% discount on any website wood purchase. Use "WOODTURNERS" coupon code at checkout. [www.nwfiguredwoods.com](http://www.nwfiguredwoods.com)
- 12) Paw Prints Printing [WWW.paw-prints.com](http://WWW.paw-prints.com) 802 865 2872 Gregory Drive South Burlington, VT 05403
- 13) Your NEW colored plywood source. [trethaway@comcast.net](mailto:trethaway@comcast.net). Has scraps of colored plywood for resale. Listed on eBay as scratch101012. **(That's an email address. Try it.)**
- 14) The Tree House, hardwoods & mill shop. Native woods, priced from \$5.00. 1891 Williston Rd., 802-497-3530. [www.treehousehardwoods.com](http://www.treehousehardwoods.com)
- 15) Suffolk Saw of New England, Jeff & Danielle Mellott; 33 Gaudet Dr., Belmont, NH, 03220 877-550-7297

## Want Ads

### In House

### Demos:

All demos and dates are tentative until they appear on Page 1 of the newsletter.

March 18th. Remote Demo—Mike Mahoney

April 8th.—April Board meeting—Randolph Center

April 15th—Resin Casting in Turnings—Brad Blaisdell

### Mentors Wanted Share your Skills

For sale: Trend Airshield Pro air circulating face shield. Only worn a half dozen times. Retails for \$369 – asking \$250. Contact Karen 802-868-6161 or [kdi1@myfairpoint.net](mailto:kdi1@myfairpoint.net). I'll bring it to the next meeting.

### Instructors For Hire

Nick Rosato-  
802-999-2976  
[nickrosato@gmail.com](mailto:nickrosato@gmail.com)

Once and twice turned bowls  
Coring with the Oneway Coring system  
Understanding and using gouges  
Spindle turning and duplication  
Hollow Turning  
One-on-one instruction at my shop or your shop.  
Flexible scheduling. \$250 half day. \$400 full day.

### WTNV Liability Insurance

### Liability Insurance Policy

As of April 2013 we are covered by a liability policy with the following limits:

Each occurrence: 2M; Damage to rented premises: 1M; Med expenses: 10K;

Personal injury: 2M; General aggregate: 4M; Products aggregate:4M.

The Hartford; Agent; Michael George:  
(317) 735 4072; [mgeorge@amj.ins.com](mailto:mgeorge@amj.ins.com)

This policy covers all members at all

WTNV events.

If you are demonstrating, this policy will not cover any claim if you are being compensated either by commission or sale of your turnings. In other words, this does not serve as an individual business policy.

### Woodchuck Mentors

These Woodchucks are able and willing to help other Woodchucks wanting some hands-on instruction.

**Dick Montague: General turning, all aspects plus tool sharpening.**  
802-584-3486

[Montagueturn@gmail.com](mailto:Montagueturn@gmail.com)  
Groton

**Russ Fellows: General, segmented, & multi-axis turning**  
802-899-3059

[skunkmen@gmail.com](mailto:skunkmen@gmail.com)  
Jericho

**Ted Beebe: Segmented work.**  
802-849-2436

[Teddy.beebe@gmail.com](mailto:Teddy.beebe@gmail.com)  
Fletcher

**Tom Dunne: Hollow turning, etc.**  
802-388-6981

[jthomasdunne@gmail.com](mailto:jthomasdunne@gmail.com)  
Middlebury

**Brad Dinwiddie: General turning, peppermills, utensils, pens**  
802-275-7185

[brad@frogpondwoodturning.com](mailto:brad@frogpondwoodturning.com)  
Underhill