

# Woodchuck Chatter

The Newsletter of Woodchuck Turners of Northern Vermont

An Affiliate of American Association of Woodturners

Website: [WWW.WOODCHUCKSVT.org](http://WWW.WOODCHUCKSVT.org)



March 11, 2020

Volume 18 Number 3



## Virtual Meeting 3/17/21

### Inside this issue:

Woodchuck Board Info	2
Random Shots—Perspective	2
Treasurer's Report - Karen Drennen	3
Attention Woodchucks! Special Raffle	3
February Meeting Continued	4, 5,
Sharpening Talk—Dave Buchholz	6
Skunk Hollow Sawdust—Russ Fellows	7
Board Meeting: 3/4/21—	8
News from Jim Holzschuh	8
Member Profile—Jeff Petter	9,10
“Make Your Bed” - Ted	11
Resource Page	12
Tool Tips—Dave Buchholz	12
Classified Ads ; Items For	13
Want Ads	14
Call For Mentors	14
Liability Insurance	14
Upcoming Demos	14
Mentor List	14

This month, we open the ZOOM meeting at about 6:45 and get to know each other.

The ZOOM link will be coming to you soon. We are asking members to prepare a short presentation for the meeting. Your presentation can be live, recorded, or Power Point (or equivalent) You can do a shop tour, a skills demo, or something else related. If you need any help getting your demo onto the Zoom platform, contact Jay or Fred Petter for help. See the 2nd page for listings.

Andy Duling will show how he makes a fishing lure. Ted Lattrell will give us a shop tour.

We have an AAW grant for our video equipment, worth \$1,000. Russ Fellows is in the process of buying the equipment and software. The balance of the money will be taken out of our Treasury. Of course, if you wish to help out with this expense, please do. Just remember, it's not tax deductible.

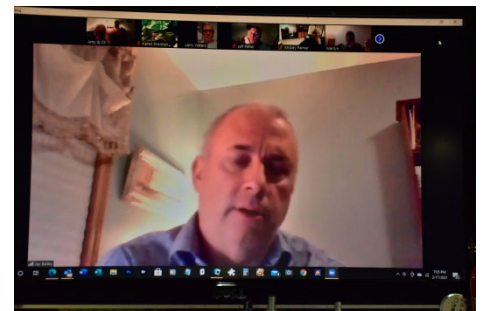
## Virtual Meeting --2/17/21

President Jay meeting called the Zoom meeting to order at 7 PM. There were twenty online participants.



Jay mentioned that the AAW is putting on a lot of online demonstrations. He encouraged club members to take advantage of them. Some are free and those that had a charge were discounted for AAW members.

Russ Fellows will be getting high speed internet mid-March that will give better bandwidth for remote demonstrations.



K Liddiard introduced himself and said he is interested in learning as much as he can with the club.

Record Power equipment is offering demos. They are available for free.

Mickey Palmer reminded everyone that there are 100 DVD's available to members in the club library. There was a discussion as to whether these could be streamed to members.

(Continued on page 4)

### Woodchuck Turners of Northern Vermont Board of Directors

President: and  
Web Master  
Jay Bailey  
22 Cobble Hill Meadows  
Barre, VT 05641  
(802) 479-1458  
[tjaybailey@yahoo.com](mailto:tjaybailey@yahoo.com)

Vice-President:  
Dave Buchholz  
5 Randolph Road  
Keeseville, NY, 12944  
518 834 9524  
[dbuchholz@northwestern.edu](mailto:dbuchholz@northwestern.edu)

Secretary: Harvie Porter  
39 Randolph Ave.  
Randolph, VT 05060  
802-728-4265  
[weltradler@gmail.com](mailto:weltradler@gmail.com)

Treasurer: Karen Drennen  
12 Winters Court  
Swanton, VT 05488  
[kdu@myfairpoint.net](mailto:kdu@myfairpoint.net)  
802 868 6161

Member-At-Large  
Andrew Duling  
2432 Ballard Rd.  
Georgia, VT 05478  
[AEDuling@gmail.com](mailto:AEDuling@gmail.com)  
802 999 4491

Member-At-Large:  
Bob Martin  
36 Calais Rd.  
Worcester, VT 05682  
Phone: 802-223-7475  
[martrlm@yahoo.com](mailto:martrlm@yahoo.com)

Member-At-large  
Jeff Petter  
83 Applewood Drive  
Williston, VT 05495  
[jpetter@gmail.com](mailto:jpetter@gmail.com)  
802 461 3583

Newsletter Editor:  
Arny Spahn  
Reporter, Assistant Editor,  
and Proof Reader:  
Cil Spahn  
89 Tom Wicker Lane #229  
Randolph CTR., VT 05061  
[Woodchuck540@gmail.com](mailto:Woodchuck540@gmail.com)  
802-728-4799

It seems early Spring is a time when things which have been covered up for the Winter now come back into view. Depressing as it sounds, this is the season when many folks decide they have had enough. Some let themselves go through natural causes, some quit deliberately. And some folks decide that they want to stop doing what they have been doing and move on to something else.

Part of this is caused by “Seasonal Affect Disorder”. Just what it sounds like. The gloom of Winter sets in and causes emotional gloom.

For me, it makes me contemplate everything I do and if it is worth continuing to do it. Frankly, I do a lot. Much of it is dealing with people, some of it is just my hobby activities.

AAW gave us a grant worth \$1,000; to get and retain this grant, we have to send AAW a W-9 form plus certify that the money was used for the purpose we asked for.

The W-9 form simply states who we are and what our Tax Information Number is. We did file for a TIN in the past, but we have not actually used it or filed a form 990 (non profit financial report) within memory of the club.

That presents problems which Jay and Karen are trying to resolve. To say that this problem increases the stress they are under is probably an understatement. We had a short meeting the evening of the 9th to talk about the situation and decided to continue to work it out.

I have been producing “Chatter” since it was born, over 17 years ago. When we met in person, it was fun to be part of the meeting, take photos, write up the demonstrations, and ask for input to fill out the issue.

After we froze up due to the pandemic, it’s not as much fun for me. Still, I feel that “Chatter” has some importance. It has always been more of a “journal” than a “newsletter”. “Chatter” is a record of what

the club has been doing more than a source of news. The introduction to the upcoming meeting, the top 1/3 of the front page is important as is the last page with its information. Most of the rest of the issue is about the past meeting with some articles which members have sent in.

During the pandemic, I have had to photograph my monitor while sitting here at my desk. The photos are useful, but not very pretty. I usually spend several hours formatting the photos for size and clarity so they are valuable to the reader. Harvie does an excellent job of taking minutes of each meeting, including Board meetings, so I only have to remember some of the captions for photos.

The only way putting “Chatter” together, would be hard if I had to start from scratch each time. Build up from blank pages, find the various info like want ads and Board information, etc.

I doubt that there is anyone out there who has more experience putting newsletters together, but I bet there are folks who could take “Chatter” and turn it into a newsletter which would win recognition at AAW.

If you get the impression that I’m tired of the monthly hours of putting “Chatter” together, you are right.

In October, we will hold elections again. All posts are available as we only have 1 year terms. The Treasurer has already given notice that she will not run again. Since we changed our Bylaws, the Newsletter Editor also seems to be an elected position, so that’s open for nomination and election. If there is a member who likes the idea of taking “Chatter” to a new level, I would be glad to step back.

*Arny*

**Balance forward**

\$4946.34  
 Dues \$350.00  
 Raffle \$0.00  
 Total Income 350.00  
 Feb '21 Zoom \$15.89  
 Bank service charge \$3.00  
 Total expenses \$18.89  
 Balance ending \$5277.45

Karen Drennen/Treasurer

*Reminder: Unless you have paid your annual dues by April 1st your name must be removed from the discount list.*

The Board of Directors of The Woodchuck Turners of Northern Vermont gratefully acknowledges the payment of dues from the following members for **2021**:

Jay Bailey, Ron Bauer, Wayne Beauchemin, Ted Beebe, Dale Bergdahl, Chris Bishop, Brad Blaisdell, Jodi Blaisdell, Robert Bouvier, Bill Breen, Dave Buchholz, Richard Butz, George Cacchio, Sal Chiarelli, Charles Cieri, Janet Collins, Mike Deweese, Brad Dinwiddie, Karen Drennen, Andy Duling, Tom Dunne, Argie Economou, Joe Fortin, Joe Gaines,

Barry Genzlinger, Tom Gerner, Mike Glod, Tracy Gryger, Rick Hamilton, Damon Hartman, Linda Hollingdale, Brad Jackson, Eddie Krasnow, Ted Lattrell, Luc Lefebvre, Kevin Liddiard, Lucinda Love, Chris Lumbra, Bob Martin, Gerry Martin, Ted Nelson, William Nestork, Mickey Palmer, Jeff Petter, Harvie Porter, Randy Ramsden, Brian Reed, John Reilly, Barent Rogers, Sam Sanderson, Robert Schumacher, David Scrase, Edwards Smith, Army Spahn, Cil Spahn, Marilyn Stolberg, Adam Wager, Gary Walz, Mike Washburn, Larry Waters (53)

(Scott Bennett, Russ Fellows, Ted Fink, Dick Montague, Michael Mode, Nick Rosato, Hav Smith and Al Stirt are Honorary Lifetime members, (8)

If you have paid your dues for the year but do not see your name listed here please contact me to correct that error of omission.

[KD11@myfairpoint.net](mailto:KD11@myfairpoint.net)

Dues for 2021 are \$25. Checks should be made out to "WTNV" and sent to: Karen Drennen, 12 Winters Court, Swanton VT 05488

Please note: The following privileges are only available to dues-paying members: Video library use, mentoring program, bulk purchase discounts such as CA glue and Anchor Seal (when available), Klingspor, Hartville Tool, & Penn State Industries discount lists, (to remain on the discount lists dues must be paid by April 1<sup>st</sup> each year). Mention the club to get your discount. PSI and Klingspor request you log in **before** you order anything to ensure your discount.

**I will be leaving the Board as Treasurer this year. If you are interested give me a call!**

**Last Chance!!!**

You need to pay 2021 dues by April 1<sup>st</sup> to be on the discount lists for this year. The lists are only submitted once a year (per vendor request). If we have your dues to be on the list, your name is listed above. If you have any questions, please give me a call. 802-868-6161

**ATTENTION WOODCHUCKS!!**

We are having a fundraising raffle of the Franck Johannesen Norfolk Island Pine vessel he made in the remote demo he did for us for our October meeting. It is about 12 inches tall, and has a threaded lid of Bocote, and has a retail value of \$250. Tickets are \$3 each, four for \$10. Buy as many as you want! All the money collected will be added to the EOG grant money for the purchase of our new video equipment. Please let me know by email ([russfellows@outlook.com](mailto:russfellows@outlook.com)) how many tickets you would like. The drawing will be at our first post-covid in-person meeting, hopefully June! You can buy tickets right up to the drawing! When you order tickets, I will forward it to Karen and she will collect from everyone.

Thanks.....and good luck!

Russ

PS If, when you order tickets and you don't get an acknowledgment from me after a few days, write again. I get so many emails I often miss some, and I will keep my on the spam box as well.



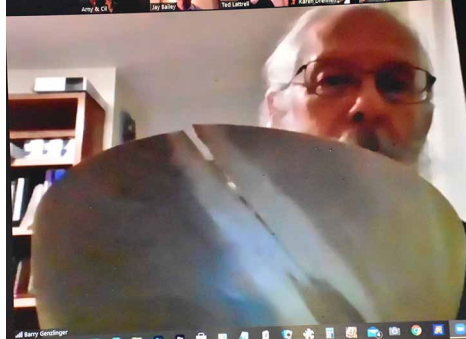
(Continued from page 1)

Jeff Petter thanked Arny Spahn for the excellent work on Chatter. Dave Buchholz added that he had created an index to the last ten years editions.

Jay asked for ideas for future meeting topics. Jeff Petter mentioned sanding and finishing.

Tom Dunne suggested a session on what tools are needed for a starting turner

Show and Tell



Barry Genzlinger showed a cherry bowl that contained a branch that split after it was turned. It will become a an artistic challenge



Ted Lattrell showed a small lidded box and a large covered bowl of apple wood finished with friction polish.



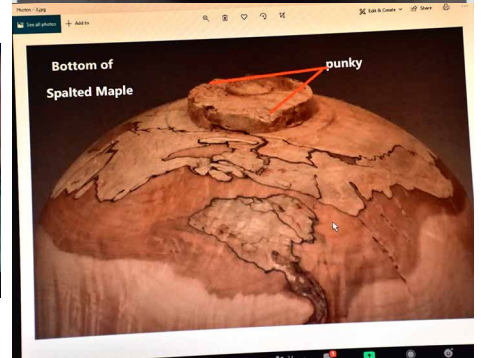
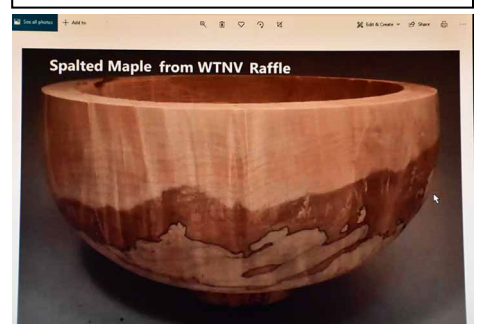
Bob Martin showed a heart turning he had made for his wife.



Jeff Petter showed some hollow turnings that had shifted shape as he turned causing issues with keeping an even thickness.



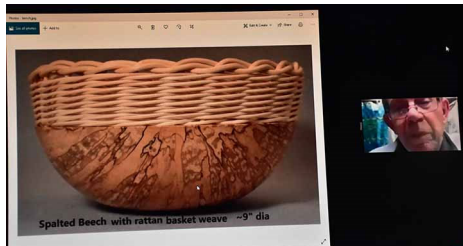
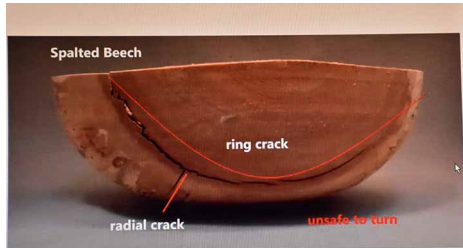
Tom Dunne showed a large piece from a hickory burl and two smaller pieces created when one of the cores split.



Dave Buchholz shared a butternut bowl that he had cut through the bottom. He also shared a spalted maple bowl that had a tenon release due to the punky wood. He showed a blank with both radi-

(Continued on page 5) (Continued on Page 5)

(Continued from page 4)

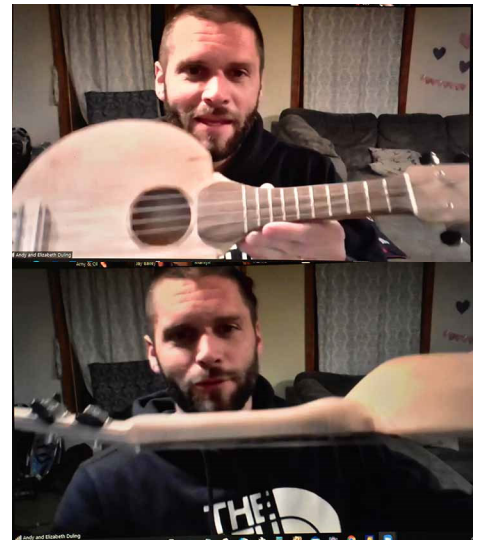


al and ring cracks. Dave also presented several bowls of Ash and with blue dye accents and rattan basket weave top. He demonstrated how the basket was attached.



Arny Spahn showed a walnut bowl for which he had cut through the bottom while trying to make three legs. He turned a hole in the bottom and added a patch.

Micky Palmer shared a turning that had had been intended to be an urn, but ended up being a lidded box.  
Dave Buchholz then gave a presentation on sharpening.  
Respectfully submitted,  
Harvie Porter, Secretary



Andy Duling showed a ukulele that had a turned bowl for its base and its neck is a half of a turning. He felt that the neck was too large and that the ukulele had poor sound.



Gary Walz showed a resin and pine cone turning where the tenon had failed. The turning had broken into four pieces and was repaired with CA glue.

The following are the images from Dave's presentation on sharpening.

**Why Sharpen Tools**

- Essential for safe cutting
- Easier to cut wood, less time
- Get cleaner cut surface
- Less sanding

Dave Buchholz  
February 17, 2021

**What do I have to sharpen**

No Brand Name Slow speed grinder 1725RPM  
CBN 8 inch by 1 inch wheels- 350 and 80 grit  
Do not use carbon steel tools on this, only HSS

Rikon Slow Speed grinder  
Aluminum Oxide 8 inch by 1 inch wheels 120 and 60 grit

Harbor Freight Belt Sander- rarely use  
Flat grind instead of hollow ground

Diamond Hone- use only on detail spindle gouge

**Grinder with CBN wheels and Wolverine support**

80 CBN wheel

350 CBN wheel

Wolverine support

**Grinder with Aluminum Oxide Wheels and flat tool rest support**

Al Oxide wheels need to be dressed periodically unlike CBN wheels  
As wheel gets smaller you need to adjust jig angles  
Al Oxide will get grooves if you sharpen in the same spot

Wheels cheaper than CBN

Diamond dressing tool

**Flat Tool Rest- RoboHippy model**

Pin controls angle

Hose clamp sets spacing

Skews Scrapers Parting tool

**Sharpening gouges**

- Free hand  
Requires skill and practice  
Hard to avoid multiple facets
- Use of jigs  
Reliable and reproducible results  
Saves tool steel

**Jigs for holding gouges**

Vari-grind jig

Vari-grind 2  
Holds gouge in center of wheel so won't slip off wheel

Fuzz ball

**Ellsworth gouge and jig**

Setup only requires extending tool 2" out front of jig and setting distance from wheel

When using jig, spend very little time at point of tool, most time is spent on sides

**To set distance gouge extends from jig**

Ellsworth jig for 5/8" gouge

1/2" holes drilled 2" and 1 7/8" deep penny glued at end

**Sharpening Demystified** by Kirk DeHeer  
American Woodturner Winter 2006

An inexpensive metal protractor will help you measure your tool bevels.

**For best control of sharpening, hold the Vari-Grind in your hand. Avoid attempting to control by gripping the tool handle.**

**To create double bevel on gouge**

Grind first bevel

Move tool rest in, grind second bevel at back

**Double Bevel**

Detail spindle gouge very aggressive without second bevel

Only tool that I regularly use a diamond hone on to extend cutting edge

**To use flat tool rest- hold tool securely on rest while moving tool with other hand**

Last issue of AAW Woodturner journal- tool tip- mark lines on your tool rest

**Diamond Parting tool**

Need to keep peak at the point of maximum width

Greetings fellow Woodchucks!

And greetings STILL, from Skunk Hollow, although by the time you see this, I will be in Florida for my much abbreviated winter escape. Things back to normal soon? We sure hope so!

In past meetings we have shared our “mistakes”.....now it’s my turn! I put the word in quotes because I regard it more as an example of the rule of unintended consequences! In the first picture is a fairly normal looking segmented bowl of gonzalo alves (often marketed as Tigerwood), and a zebra wood rim. I put them together partly because they looked good, but also, I got a chuckle from writing ‘tiger’ and ‘zebra’ on the label! 😊 The zoomed in shot shows the “mistakes”, CRACKS, and in several places! Fortunately it happened in a gallery, before someone purchased it! They took it off the shelf and it had been sitting there for quite a while before they remembered to mention it to me. Now for the reason I have called it a qualified mistake. There were many cracks, but none on glue joints? When people have asked me about the glues I use, I frequently say, when done correctly the glue is stronger than the wood, and this was an example. The lesson here, even with kiln-dried lumber and using all the right rules of segmenting, things can happen! I have used gonzalo alves before without problems, so my suspicion is that I chose the board for its figure, and that it was cut from the outer part of the log, the most unstable part! Had it been quarter sawn, or at least from the inner portion of the log, it might not have happened. I also rarely bother with a moisture meter when making small segments. In this case, I should have! The take-away here? If you are planning a segmented piece, be very selective about your lumber and read the grain carefully. And use your moisture meter. Even kiln-dried lumber can significantly change in moisture content over time and location! I bought the board in Florida, made the bowl here, and delivered it to a gallery during the heating season when their forced hot air system was cranking and the humidity was very low. Fortunately I have only had one other bowl crack in a gallery, and it WAS my fault!

The next few pix show some Christmas presents to self! The easiest person on my list for whom to shop! I saw the bowl calipers on a website and liked the design. My digital cali-

pers will not reach more than four inches, so that was my rationale for trying these. They have a spring-loaded stalk with graduations in sixteenths, and those graduations can be cross checked and calibrated. Craft Supplies, about \$60. The plastic layout template has been around for quite a while. I had never owned one, now I do! Also Craft Supplies, about \$15. They were offering free shipping for a while after the holidays! How easy it is to rationalize!

The other pix show some new turning tools. The first is of my new negative rake scraper from Carter and Sons (<https://carterandsontoolworks.com/>). It is next to my old Sorby which I have talked about with many of you at the Sawdust Sessions. It has been sharpened so many times much of the mass of the tool is gone. I really like the Carter tools. They use a super premium steel that holds an edge extremely well, have big 1/2 inch tangs, and heavy, but well balanced handles. Ditto with the two parting tools in the other photo. One is 1/16th inch, the other 1/8th inch. I use parting tools a lot more these days, and these Carter’s are really excellent upgrades from my old ones. As with all of the Carter tools, the blades can be purchased separately from the handles. As with all premium tools, they are pricey. You do however, get what you pay for!

I will be returning from Florida in early May, and really hope by then that the pandemic situation will have continued to improve and we can start having Real Woodchuck gatherings again!! Watch your email and Chatter for updates.

Cheers!  
Russ Fellows  
([Russfellows@outlook.com](mailto:Russfellows@outlook.com))  
(802-343-0393)



President Jay Bailey called the meeting to order at 7:30 PM.

Virtually present: Jay Bailey, Dave Buchholz, Andy Duling, Jeff Petter, Arny Spahn, Karen Drennan, Bob Martin, Harvie Porter

The board first discussed ideas for the March meeting. Andy Duling suggested that members make short videos that could be shared at the meeting. All agreed this would be a good idea.

Dave Buchholz was asked if he would announce to the members that we had received the grant from the AAW for our video equipment. Dave brought up that in his discussions about the grant with our treasurer, Karen Drennan, that the club didn't have a record of its non-profit status. Karen said we haven't been filing any kind of tax form for as long as she has been treasurer and in talking with Ted Fink, he hadn't filed

either. Karen said we may have had non-profit status at one time as she had a tax ID number. It was brought up in discussion that if a tax form isn't filed for three years, the non-profit status could be lost. The board approved that Karen get in touch with the IRS and if we don't currently have non-profit status, begin the process of applying for it. There is a fee for the application and the board approved the expense.

Dave Buchholz brought up the topic of points of vulnerability for the club. It was felt that there should be redundancy in some of the tasks necessary for the club to function should one of the board be unable to perform their duties. For example, should Jay become incapacitated, who would have the technical know-how to run the Zoom meetings or update the website? Should Karen not be able to perform her duties, who would be able to access the club records and balances? It was decided that

each officer come up with a plan for a "backup" for the next board meeting.

The discussion returned to planning for upcoming meetings. Barry Genzlinger is scheduled for the May meeting. He will be doing a presentation on beer tap handles. For April, club members will be invited to give presentations on "something you can sell" in anticipation of the summer's craft fairs. For June, Russ Fellows is tentatively scheduled in. Topic to be decided.

The next board meeting is scheduled for April 7.

The meeting adjourned at 8:37.

Respectfully submitted,

Harvie Porter, Secretary

## News From Jim Holzschuh

Spring is upon us and flocks of robins have been seen eating the juniper berries near our deck - I hope they don't get gin-drunk. Easter is right around the corner and the requests for wooden eggs have been coming in hard and fast from out ETSY shop. I made these nine due to a request coming from a lady in Nantucket. She wanted all different woods and it gave me a chance to use up some of the small scraps kicking around under the workbench. A fun project - I included this image explaining what the woods were with the package as it was sent off. Get your Covid-19 vaccine when it is your turn. I got my two last month - being in that age category of "older-than-dirt"... I also got a clean bill of health from the doctor telling me I was cancer free. We'll keep

checking on it but that was good news. Happy Spring everyone.

*Jim*





**Where are you from originally, and where do you live now?**

Born in Janesville Wisconsin, now I live in Williston

**How long have you lived in Vermont (or northern New York State)?**

First moved to Jericho Vermont in 1982 left in 1983 then back in 1989 to Williston

**Tell us about your family? Wife's name, kids, grand children?**

My Wife is Melinda, retired engineer worked at IBM, FermiLab, than Efficiency Vermont

Son, Nathan, 32, Lives in Fort Collins CO, single, Robotics Engineer and Mountain Bike Racer

Daughter, Danielle is 34, married lives in Bozeman Montana, Net Zero Energy Consultant

Granddaughter, Zera is 4 years old, lives in Bozeman Montana

**Where did you go to school, and what kind of schooling was it?**

High school was in Janesville Wisconsin, Sports were Gymnastics and Track, and lots of parties

College University of Wisconsin, Madison, Electrical Engineering, Lots of fun.

**What is your day job, or what was it before you "got done"?**

I started as an engineer at IBM in Essex for about 9 months did not like it.

Went to Fermilab in Batavia Ill, Engineer II for 7 years loved it and learned a lot

Moved to Vermont in 1989 to work at Dynapower in South Burlington, R and D engineer. designing power conversion equipment for scientific and industrial research.

The last full time job I had is was Chief Engineer at Northern Power systems and WEG electric in Barre designing Inverters and power systems for wind turbines. Now I am semi-retired, part time consultant working on engineering of electric aircraft power systems, wind turbines, and utility battery systems.

**How did you get started in woodwork and/or woodturning? How long ago?**

My grandfather gave me a job cleaning his

cabinet factory on Saturdays in Fort Atkinson WI in 1969. I was 10 yrs. old. I started building things from the scraps I took home. Now and then he would let me use some of his tools. The employees there would teach me stuff too. At 12 they had me cutting little things they need on the band saw and gave me sanding projects. When in high school I had a small shop in my parent's garage and basement. I made some simple furniture. Sold my tools to help pay for college. Got back into woodworking when a friend got divorced and left his tools in my basement. My first turning was on this friend's lathe. This was 1984. I made three bowls back then. I really liked it. He took his tools back after about 6 months. After that I slowly purchased more tools and started building basic furniture. Slowly I tried more and more complex projects. No lathe though. I made practical stuff. In 2018, I purchased a WoodFast M910 lathe from a former Woodchuck (Haviland Smith). I started turning trees that came down in my yard, and wood from firewood in my wood pile. What fun. In 2020 I purchase a Powermatic Lathe.

**Are you entirely self-taught or have you taken classes? Where, and with whom?**

I had some instruction at age 12-14 from my grandfather and uncles but other than that I am self-taught I have read a lot. Fine Home Building, Fine Woodworking, Wood Smith, Tag Freid, for turning I have read books by Richard Raffan, David Ellsworth, Keith Rowley, and Michael Dresdner plus lots of You Tube recently.

**What do you like to make? Are your turnings primarily for gallery and craft show sales?**

Not sure what I like best it keeps changing. I like trying new things and getting new tools mostly. I don't know what the stuff I make is for. I just enjoy making different things on the lathe. I am at nearly 200 items. I still have most of them. I gave some as presents and sold one bowl. My wife wants the best ones and for me to get the rest them out of the house. I am just interested in making them. Each one is better than the last. I am still experimenting.

**What do you listen to in your work-****shop?**

VPR mostly, I like Blues for Breakfast on Sunday mornings on WIZN, All the traditions on Sunday night on VPR, as well as American Routes on Saturday nights on VPR.

**If you could have any wood in the world, what kind would you like to turn?**

I want to stick to local wood. I really like turning burls; the nicest piece so far was a paper birch burl. I guess I would like to find more of them. I was just a beginner when I turned first piece. The wood is wonderful but the piece I made I don't really like. I have a friend that has a very large one growing in her woods, she said I can have it any time. I am waiting until I am a better turner before harvesting it.

**Are there any woodturners whose work you admire?**

There are so many turners that are better than me, I like them all. Everyone has some interesting to show. I don't really know any specific turner's work.

**Beside woodturning, what do you like to do for fun and relaxation?**

Lately the back country skiing has been excellent right out my back door. I like to fish from my solo canoe, especially in very remote places like Northern Ontario, Northern Maine. I also spend time mountain biking, alpine skiing, playing board games, hiking, snow shoeing and tasting fermented beverages.

**What other things about yourself would you like to tell the club about?**

I have raced the Vermont 50, 9 times. (mountain bike race). Entered 12 times but got rained one year and injured twice.

I have over 30 patents for electric equipment and controls related to particle accelerators, wind turbines, inverters, and battery energy storage.

I have a lot of knowledge about variable speed motor drives. If anyone needs help converting an older lathe to variable speed or fixing one, I should be able to help them.

I am looking for a new place to live where I will have room for a larger wood working shop and cannot hear F-35s!

**How about including some photos of**

**your work / yourself?**

**Part 2: Feedback for the club.**

**What kind of programs would you like the club to present?**

I am very interested in learning to turn good finishes and hard to turn woods like spalted or figure wood like curly maple. Both sharpening and turning techniques, I guess.

I also want to learn more about finishing. I am looking for durable, thin, not plastic looking finish that is very easy to apply with out worrying too much about dust.

**Besides CA Glue and Anchorseal, what kind of bulk purchases would you like the club to make?**

May be sanding discs? I don't used much CA glue or anchor seal.

**Can you suggest any field trips for the club?**

Wish I could. I would like to go on some.

**What instructional DVDs should we have in our library?**

I have not seen any but I would like to find out more about the library.

**Any comments or wishes for "Chatter" or the website?**

Chatter is excellent

The web site is good, the only thing to improve is to keep it UpToDate there are some old things here that make seem to be a little neglected. I know it is a lot of work to keep this up to date but just removing the out of date stuff should help.

**Who would you like to see profiled next???** Tag!!! You're It!!!

I like seeing anyone's profile. It seems most people are more interesting than I expect.



Hiking in Maine near Rangeley



I built the table the chairs and the screen porch these are in. The porch is timber framed in Douglas fir with a mahogany floor. The table is curly maple and butternut. The chairs are made of Birdseye maple.



I make cutting board from curly maple and walnut, like these for wedding presents. I often add in a few carved spoons.



A collection of some of my recent turnings. 3 Spalted Maple, 1 Butternut, 4 Cherry Burl, 1 apple, 1 Spalted Beech and 1 Rosewood



chances with the tree. I hammered in 3 steel wedges swinging the sledgehammer faster than I thought possible. Very slowly I was able to get the tree straight upright and free my saw. I was still bucking the tree when my friend returned from work. He was favorably impressed by the result (the tree had fallen exactly where intended.) but he still remains blissfully unaware of the great peril involved.

To put bookends on my bed making, the 7th which I am currently building, is for my 2 year old granddaughter who is graduating from her crib. This bed is made of black cherry which was more easily obtained. (I do learn from my mistakes)

Every bed I have made has turned foot and headboard posts topped with a sphere.

This feature has endeared itself to me as the top of the post provides a useful guidepost and an inviting grip point while navigating a darkened bedroom.



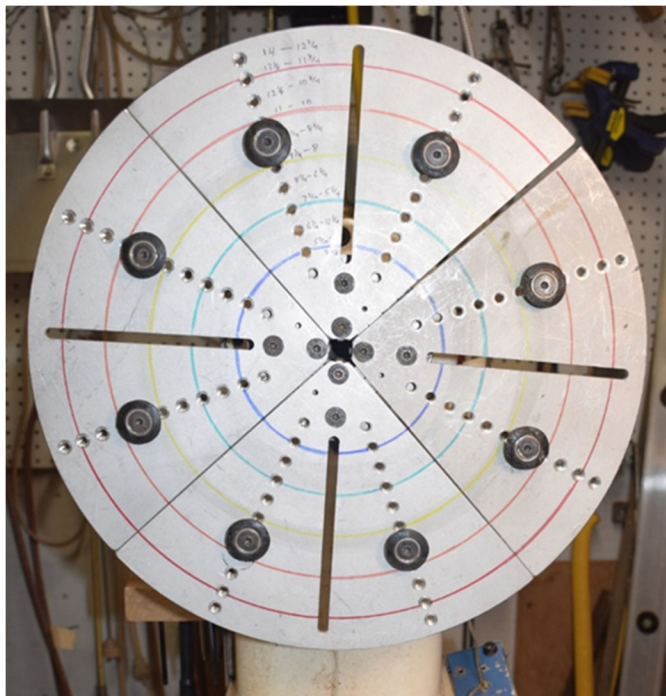
How many times did we hear that growing up? Anyway I have taken that admonition literally, having made 7 beds. The first was a Queen-sized oak bed that I built in 1980 and still use to this day.

The wood I used in that project holds a very special, and somewhat unpleasant place in my memory. It came from a friend's large oak tree he needed felled. The oak was 15" in diameter chest high and stood straight up just 20 feet from the back of his house where his wife was busy in the kitchen. A steady romph wind was pushing the tree directly toward the house. With overconfidence and certainly against my better judgment I decided to proceed. After cutting a deep wedge and well into the back cut the wind picked up and my chainsaw became irretrievably clamped in the kerf. The tree tilted ominously toward the kitchen. I didn't know whether to get my friend's wife out of the house or try to save the situation at the tree. I recall breaking out in a cold sweat and quickly decided to take my

- 1) Lathrop Maple Supply, Hewitt Rd, Bristol, Vermont, 802-453-2897. With a newly expanded inventory area, Tom has a fantastic supply of local and imported wood. His new division, "Exclusively Vermont, LLC, specializes in high quality Vermont lumber and mill products and FSC stock is available.
- 2) Hayley Wood Products in Colchester. (<http://www.hayleywoodproducts.com/>).
- 3) Sutherland Welles Ltd., No. Hyde Park, VT, 800-322-1245. ([www.sutherlandwelles.com](http://www.sutherlandwelles.com)). Right here in our own back yard, they make the best Tung oil products in the U S. Call with an order and it goes out the same day!
- 4) Johnson Lumber, Route 116 in Bristol, VT. 802-453-4884. Another good "local" source for hardwood lumber of all kinds.
- 5) [www.exoticwoodsusa.com](http://www.exoticwoodsusa.com). They offer a 15% discount to any member of an AAW chapter. Type in 'exoticwoodsusaaw' in the coupon code box.
- 6) Griffin Exotic Woods These folks came up in a search for something else, and I ended up buying a couple things from them. Their prices were fair and the service was good. <http://www.exoticwood.biz/>
- 7) Sinclair Mill Works in North Danville VT <http://www.sinclairmillworks.com/home.htm>. 802-748-0948. He specializes in figure Vermont species. His prices are very reasonable.
- 8) Mike Jackofsky—hollowing tools. [www.mikejackofsky.com](http://www.mikejackofsky.com). Also sells thru Craft Supply.
- 9) Business cards and other printed goods: [Vistaprint.com](http://Vistaprint.com)
- 10) Laser engraving—Maple Land Mark Woodcraft. 800-421-4223 They are in Middlebury. [www.maplelandmark.com](http://www.maplelandmark.com)
- 11) Les Dougherty & Susan Curington Owners, North Woods Figured Wood North Woods,, LLC PO Box 808 Forest Grove OR 97116 [800-556-3106](tel:800-556-3106), [503-357-9953](tel:503-357-9953) [www.nwfiguredwoods.com](http://www.nwfiguredwoods.com) offers lifetime 15% discount on any website wood purchase. Use "WOODTURNERS" coupon code at checkout. [www.nwfiguredwoods.com](http://www.nwfiguredwoods.com)
- 12) Paw Prints Printing [WWW.paw-prints.com](http://WWW.paw-prints.com) 802 865 2872 Gregory Drive South Burlington, VT 05403
- 13) Your NEW colored plywood source. [trethaway@comcast.net](mailto:trethaway@comcast.net). Has scraps of colored plywood for resale. Listed on eBay as scratch1rot012. *(That's an email address. Try it.)*
- 14) The Tree House, hardwoods & mill shop. Native woods, priced from \$5.00. 1891 Williston Rd., 802-497-3530. [www.treehousehardwoods.com](http://www.treehousehardwoods.com)
- 15) Suffolk Saw of New England, Jeff & Danielle Mellott; 33 Gaudet Dr., Belmont, NH, 03220 877-550-7297

### *Tool Tips – Dave Buchholz*

I use Jumbo Cole jaws on my 4-jaw chuck to finish the bottoms of some bowls and platters. Deciding where to place the bumpers was something of a trial and error for each piece. In addition to that, making sure that the bumpers were all at the same radii meant counting the holes from the end for each bumper. To solve the first problem, I measured the minimum and maximum diameter when the bumpers were put at the same radii around the jaws. I marked these limits in pen next to holes on one jaw. These can be seen near the top of the picture. To make sure I was putting all the bumpers at the same radii, I drew colored bands around the jaws. Now I only have to look for a similar color band rather than counting the number of holes. In addition, when I setup the jaws, I first measure the diameter of turned piece, check the diameter against the ranges marked on the jaws, and then move the bumpers following the colored bands.



# Classified Ads: Items For Sale



Pen storage and display case, solid cherry, 5 drawer case with finger joinery. Each Drawer has solid brass pull knob and 9 pen capacity (total 45 pens). Wgt. 14 lbs. 11" X 11" X 8.5" \$75.00, Contact Ted Fink 802 985 2923 [tjfturnings@gmail.com](mailto:tjfturnings@gmail.com)

I have a lathe for sale! All the information is on the craigslist ad here: <https://vermont.craigslist.org/tls/d/williston-wood-lathe/7146512631.html>  
Jeff Petter

**Used Equipment For Sale—Randy Ramsden**  
Veritas Cyclone Lid  
Not offered in clear anymore that is so much handier. 4" inlet / outlet fits on 33 gal or larger barrel.  
Works great / has protective plastic still covering it - \$20



**For sale: Powermatic Model 45 lathe.** An old green series lathe, this was my first lathe that I used for about 15 years until I got the Oneway. I sold it to a friend, who used it for a few years, but has lost interest in turning. It is located in Burlington. \$750. Give me a call for more info, or if you'd like to see it? Russ Fellows, 802-343-0393.



I have a MicroPro by MasterCarver for sale. I purchased this unit last Fall and never used it. I purchased it from Packard Woodworking Supply. Here is the link to the page <https://www.packardwoodworks.com/309330.html>  
I paid 199.95 for it and would like to get \$150.00 for it. I can probably deliver it also if the buyer is not too far. Here is a picture of it. If anyone has questions they can email me or call 802-584-4341. Thanks.  
**From:** Janet Collins  
<[curlyacer@gmail.com](mailto:curlyacer@gmail.com)>

**Want Ads**  
**Mentors Wanted**  
**Share your Skills**

**Beginning wood turner looking for his first lathe.**  
Would consider most anything except for reeves drive style variable speed. Belt change models are fine. Any leads greatly appreciated.  
Randy - [rramsden@gmavt.net](mailto:rramsden@gmavt.net)

**Woodchuck Mentors**

These Woodchucks are able and willing to help other Woodchucks wanting some hands-on instruction.

**Dick Montague: General turning, all aspects plus tool sharpening.**  
802-584-3486  
[Montagueturn@gmail.com](mailto:Montagueturn@gmail.com)  
Groton

**Russ Fellows: General, segmented, & multi-axis turning**  
802-899-3059  
[skunkmen@gmail.com](mailto:skunkmen@gmail.com)  
Jericho

**Ted Beebe: Segmented work.**  
802-849-2436  
[Teddy.beebe@gmail.com](mailto:Teddy.beebe@gmail.com)  
Fletcher

**Tom Dunne: Hollow turning, etc.**  
802-388-6981  
[jthomasdunne@gmail.com](mailto:jthomasdunne@gmail.com)  
Middlebury

**Brad Dinwiddie: General turning, peppermills, utensils, pens**  
802-275-7185  
[brad@frogpondwoodturning.com](mailto:brad@frogpondwoodturning.com)  
Underhill

**Dave Buchholz**  
General turning; advanced embellishments  
518 834 9524  
[dbuchholz@northwestern.edu](mailto:dbuchholz@northwestern.edu)  
Keeseville, NY



**In House Demos:**

All demos and dates are tentative until they appear on Page 1 of the newsletter.

**March 17th**—Members give short demos.

**April 21st**—Members show "Something They Sell."

**May 19th**—Barry Genzlinger—Tap Handles

**Instructors For Hire**

**Nick Rosato**  
802-999-2976  
[nickrosato@gmail.com](mailto:nickrosato@gmail.com)

Once and twice turned bowls  
Coring with the Oneway Coring system  
Understanding and using gouges  
Spindle turning and duplication  
Hollow Turning  
One-on-one instruction at my shop or your shop. Flexible scheduling. \$250 half day. \$400 full day.

**WTNV Liability Insurance**

**Liability Insurance Policy**

As of April 2013 we are covered by a liability policy with the following limits:  
Each occurrence: 2M; Damage to rented premises: 1M; Med expenses: 10K;  
Personal injury: 2M; General aggregate: 4M; Products aggregate: 4M.

The Hartford; Agent; Michael George: (317) 735 4072; [mgeorge@amj\\_ins.com](mailto:mgeorge@amj_ins.com)  
This policy covers all members at all WTNV events.  
If you are demonstrating, this policy will not cover any claim if you are being compensated either by commission or sale of your turnings. In other words, this does not