

# Woodchuck Chatter

The Newsletter of Woodchuck Turners of Northern Vermont

An Affiliate of American Association of Woodturners

[Website: WWW.WOODCHUCKSVT.org](http://WWW.WOODCHUCKSVT.org)



December 5, 2019

Volume 16, Number 12

## Meeting December 11th, 2019

### Inside this issue:

Woodchuck Board Info	2
Random Shots—A Learning Curve	2
Treasurer's Report -Karen Drennen	3
The President's Turn	3
November Meeting continued	4-8
Jay Visits the Barre Craft Show	9
Resource Page	10
Want Ads	11
Call For Mentors	11
Liability Insurance	11
Upcoming Demos	11
Mentor List	11

Directions to CVU: From the NW, exit I-89 at Exit 14 (Burlington) and head east on Williston Rd. (Rte. 2) for 1.2 miles. Turn right onto Hinesburg Rd (Rte. 116). Proceed 9.7 miles to CVU Rd., turn left at the light and CVU will be on you left at 0.4 miles. From the East: Exit I-89 at exit 12 ( Williston/Essex) Turn left onto Rte. 2A (St George Rd.) and proceed 5.0 miles. Turn left onto Rte. 116 and proceed 2.1 miles to CVU Rd. Turn left, school is 0.4 miles on left. After entering the drive, turn left and park in the lot near the flagpole. Go in the doors there, and look for signs to our meeting room. This is more of a party than a demo-driven meeting. Bring a pot-luck item.

You should have had a sign-up form in your email to let us know if you are coming and what you are bringing. Also the focus of the party will be a YANKEE SWAP. Bring a wrapped gift (optional of course) Set it on the table and you will get a number. When your number comes up, you choose a gift and unwrap it. The next number has the choice of taking a new gift or "stealing" yours. You then can choose another gift. No fair "stealing" your original gift back. This can be a lot of fun. The "gift" should not be expensive, but can range from a good tool you don't get enough use in, to a bottle of wine. Be imaginative and prepare to have fun!

### November 20th Meeting—Harvie Porter

Woodchuck Turners of Northern VT  
November 20, 2019

The twenty-five attendees introduced themselves and gave their home towns.

President Jay Bailey called the meeting to order at 7 PM. He announced the club will be having a holiday potluck with a Yankee exchange on December 11. The potluck will start an hour earlier than the usual meeting time. Attendees should use the entrance just past the flagpole. Signs will direct you to the correct room. Jay will be putting a form up on the internet to allow members to designate what food they are bringing.

Sixteen people participated in the raffle.

Show and Tell: Ted Beebe shared multiple pieces of segmented turning. He explained the process he used to create the segments and glue up the blanks. He displayed a variety of wooden bowls and some ornamental sunflower pieces.

Chris Lumbrá showed a cherry bowl he

*(Continued on page 4)*

### Woodchuck Turners of Northern Vermont Board of Directors

President: and  
Web Master  
Jay Bailey  
22 Cobble Hill Meadows  
Barre, VT 05641  
(802) 479-1458  
[tjaybailey@yahoo.com](mailto:tjaybailey@yahoo.com)

Vice-President:  
Dave Buchholz  
5 Randolph Road  
Keeseville, NY, 12944  
518 834 9524  
[dbuchholz@northwestern.edu](mailto:dbuchholz@northwestern.edu)

Secretary: Harvie Porter  
39 Randolph Ave.  
Randolph, VT 05060  
802-728-4265  
[weltrader@gmail.com](mailto:weltrader@gmail.com)

Treasurer: Karen Drennen  
12 Winters Court  
Swanton, VT 05488  
[kdu@myfairpoint.net](mailto:kdu@myfairpoint.net)  
802 868 6161

Member-At-Large  
Andrew Duling  
2432 Ballard Rd.  
Georgia, VT 05478  
[AEDuling@gmail.com](mailto:AEDuling@gmail.com)  
802 999 4491

Member-At-Large:  
Bob Martin  
36 Calais Rd.  
Worcester, VT 05682  
Phone: 802-223-7475  
[martrlm@yahoo.com](mailto:martrlm@yahoo.com)

Member-At-large &  
Newsletter Editor:  
Arny Spahn  
Reporter, Assistant Editor,  
and Proof Reader:  
Cil Spahn  
89 Tom Wicker Lane #229  
Randolph CTR., VT 05061  
802-728-4799  
[apspahn@comcast.net](mailto:apspahn@comcast.net)

I now have both the small size and the large size Ultra-Shear carbide cutters installed and I'm learning more as I use them. This last month I've been working on making hanging Christmas ornaments.



Turning the finials, “icicles”, is very fiddly. I started with squares, 5” long or longer. Took the roughing tool and got them down to 1/2” round, then started shaping with spindle tools. The small square carbide tool worked pretty well taking the wood down to 1/4” and also fining down the narrowest parts. I didn't understand how to make beads with the carbide tools, so I did a lot with my standard 3/8” and 1/4” spindle gouges. It takes a steady hand and a light touch to complete a finial with a thin shaft and good detail. I sometimes have to back off and wait, as I have what the doctors call “essential tremors”. That causes shakiness of the hands or of the head. I'm consulting with a neurologist and taking medications which seem to help at times.

The bodies of the ornaments are done with the same tools as the finials and are easier to make as mine are all free-hand. I do make a ball as part of the ornament sometimes, and other times I make a series of beads and coves.

The Woodpecker Ultra-Shear tools in the small size have shafts that have rounded edges and flat bottoms, which I discovered by reading the magazine which comes with the tools. This allows you to shear-cut and manipulate the tools in a different way than the other brands' square shafts.

My latest trip to the shop, I ground the shafts of my Easy Wood small carbide tools to round off the corners for a few inches and installed the Woodpecker Ultra-Shear cutters. Using that tool, I am able to make reasonable beads and nice surfaces by rotating the tool around its axis and from side to side. I still have a lot of experimenting to do before I can do most of my turning with the carbide tools. I also have to develop techniques for using the pointy “detail” gouge.

About the wood: Figured Maple is difficult to turn evenly in these small sizes, both with the carbide and the standard gouges. Some other wood I used was a reddish, relatively soft, stringy wood which was horrible to turn with the carbide tools. Cherry and dense woods shaped very easily and well.

I have learned that using the side of the square cutter works well for going around a curve. The position of the cutter in relation to the axis of the workpiece can change the way it cuts. The theoretical perfect position has the point of the tool at the centerline of the workpiece and absolutely flat. I have not observed enough to really nail down what happens if the point is above or below that axis. Also, I have not been able to tell what effect the diameter of the workpiece has on the way the cutter works. I guess I have to make a lot of sawdust before I can be really adept.

AAW puts out several publications, notably woodturning FUNDamentals. You have to be a member to access all that AAW has to offer, and it is worth the price.

This month's digital magazine features ornaments. The cover shows a hand, paint-decorating a white wood ornament, much like mine in the above photo. Included is an article featuring the work of one of our members, Brad Dinwiddie. He's made a Christmas tree from a fir post and dyed it green.

There are a total of 22 different ornaments shown in the issue, some with good detailed instructions.

Time to get to work.

Arny

**Balance Forward:**

\$3840.46  
 Dues \$75.00  
 Raffle \$32.00  
 CA glue \$0.00  
 Sawdust Donations \$1.00  
 Anchor Seal \$0.00  
 Total Income \$108.00  
 Total expenses \$00.00  
 Balance ending \$3948.46  
 Karen Drennen/Treasurer

*Reminder: Unless you have paid your annual dues by April 1st your name must be removed from the discount list.*

**Dues through October 2019**

The Board of Directors of The Woodchuck Turners of Northern Vermont gratefully acknowledges the payment of dues from the following members for **2019**:

Jay Bailey, Ted Beebe, Dale Bergdahl, Chris Bishop, Brad Blaisdell, Joyce Blaisdell, Jason Brunault, Tom Brunault, Dave Buchholz, Sal Chiarelli, Janet Collins, Karen Cutler, Mike Deweese, Brad Dinwiddie, Karen Drennen, Andrew Duling, Tom Dunn, Cheryl Ferry,

David Ferry, Joe Fortin, Toby Fulwiler, Joe Gaines, Barry Genzlinger, George Gibson, Dan Gleason, Susan Gleason, Jim Goodwin, Rick Hamilton, Peter Hebert, Linda Hollingdale, Jim Holzschuh, Brad Jackson, Joe Lafferriere, Luc Lefebvre, Chris Lumbra, Bob Martin, Tim Montgomery, Ted Nelson, William Nestork, Mickey Palmer, Mike Papin, Harvie Porter, Randy Ramsden, Brian Reed, Larry Rice, Sam Sanderson, Edwards Smith, Arny Spahn, Cil Spahn, Marilyn Stolberg, Adam Wager, Gary Walz (52)

(Scott Bennett, Russ Fellows, Ted Fink, Dick Montague, Michael Mode, Nick Rosato, Hav Smith and Al Stirt are Honorary Lifetime members, (8)

The Board of Directors of The Woodchuck Turners of Northern Vermont gratefully acknowledges the payment of dues from the following members for **2020**: Ted Beebe, Greg Drew, George Gibson, Brad Jackson, Eddie Krasnow, Randy Ramsden  
 Dues for 2019—2020 are \$25. Checks

should be made out to “WTNV” and sent to: Karen Drennen, 12 Winters Court, Swanton VT 05488

Please note: The following privileges are only available to dues-paying members: Video library use, mentoring program, bulk purchase discounts such as CA glue and Anchor Seal, Klingspor and Hartville Tool discount lists, (to remain on the discount lists dues must be paid by April 1<sup>st</sup> each year). Mention the club to get your discount.

**I have CA glue. If you need any, please contact me!**

New member:

Ron Baker  
 168 Old Orchard Lane  
 Shelburne VT 05482  
 802-343-9024  
[Email.rbaker@gmail.com](mailto:Email.rbaker@gmail.com)

## The President's Turn—Jay Bailey



As I sit here on Thanksgiving eve considering how much food will be consumed tomorrow my wish for all my Woodchuck friends is that you all have a wonderful time and enjoy some good food with family and friends. If you are brave enough to venture out for Black

Friday deals I hope you found a way to sneak a woodturning tool or accessory into your shopping list! As we quickly head into December and the endless playing of Christmas songs begin don't forget to “turn” your attention to making some Holiday ornaments. The AAW has a great publication for making ornaments in its monthly Fundamentals publication at <https://cdn.ymaws.com/www.woodturner.org/resource/resmgr/fundamentals2/WFo804-2019Website.pdf> (members only). The monthly Woodturning Fundamentals section is always full of great pictures, tips, and instructions on how to make stuff whether you are a beginner or pro. If you are not an AAW member now is a great time to sign up and take advantage of all the resources that the AAW has to offer. I hear they will be upgrading their website in mid-December so make sure to check it out as I'm sure they will have even more useful features.

Our first annual Holiday Potluck and Yankee exchange is coming quickly; Wednesday the 11<sup>th</sup> of December at 6:00

at CVU high school. I hope to see all you there; I've created a signup sheet that Arny should have sent around by the time you read this so please fill it out, should only take a couple of minutes, that way we can prepare for the potluck and Yankee exchange. It's bring a gift and get a gift; feel free to be creative with making something, bringing a tool or accessory you no longer need, or maybe a cool looking piece of wood, or whatever else you can think of. The gift should be wrapped or in a gift bag but don't put your name on it. It doesn't necessarily have to be a gift related to Woodturning but please don't bring something that no one else would want – unless of course it's a gag gift and then you never know it might be a popular gift that makes the rounds of the group.

As I finish this on Thanksgiving morning and reflect on all the things I and hopefully you all have to be thankful for; I especially want to thank everyone that's on the board for all their hard work as well as the people that that did a demo

*(Continued on page 9)*

(Continued from page 1)



Jay calls us to order with his own gavel.

turned and finished with beeswax and orange oil. He also shared a box elder bowl with a void caused by a bullet that he found in the bowl. Ted Fink shared two boxes he turned from cherry with solid ebony tops. The finish was Velvet Oil. David Buchholz showed the gingerbread men and stars he created using the ring process he demonstrated last year. He also showed multiple other Christmas ornaments he had created. Jay Bailey showed some tree ornaments he crafted. Karen Drennan showed a Christmas tree, snowmen and icicles she had turned. Arny Spahn showed the technique he uses to create finial styled ornaments.

Respectfully submitted,

Harvie Porter, Secretary



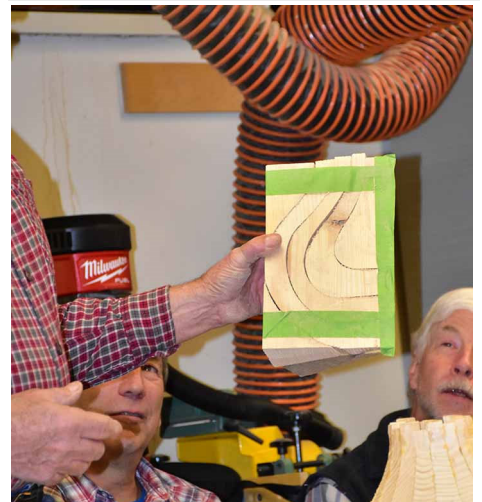
Karen starts to call numbers for the raffle.



We are all ready for the Show & Tell portion of the meeting.



Teddy found a large supply of wedge-shaped cutoffs & made lots of segmented goods with it. He refined some of the wedges to 20 degrees so he could have circles of exactly 18 pieces.



Using his bandsaw, he cut 18 wedges using a template to get 4 shapes. See below & next page for the results



This unit is glued but not yet turned to final shape.

(continued on Page 5)



These are the other 3 units, shaped & sanded.

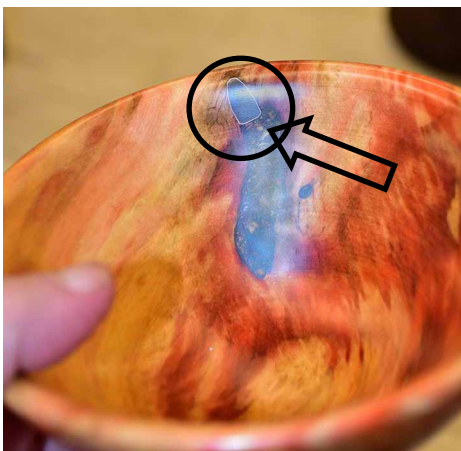


The two "sunflowers" were put together using the waste corner pieces from the original wedges.



Ted went on to talk about how he made rings of end-grain material to form segmented bowls of curly and spalted maple. The curly maple was pretty, but did not show off the figure of the maple.

(continued on Page 6)



Ted uses a grinder to apply texture to his boxes. Takes a few seconds. He also uses a "veiner" and a wire to make grooves and burn them in. Shoe polish provides the color.

Dave used the German "ring" method to make both star and gingerbread man ornaments. Turn a ring in the right shape, then cut off slices with a band-saw.

Nice bowl. And look closely at the Box Elder. That's a bullet imbedded near the rim.

(continued on Page 7)



Dave also showed a variety of turned holiday ornaments. Left, an angel. The wings are a shallow bowl sawed to shape and attached to the body with a small tenon. Top center, a creche group, 3 Wisemen, drummer boy included. Above, 2 hanging ornaments. Top right, a snowman. Bubble paint used for features. And right, a bell with clapper.



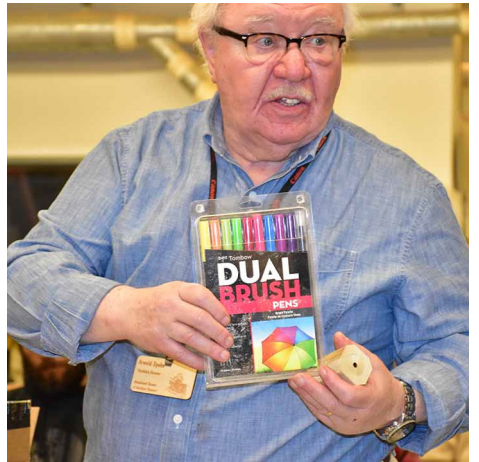
(continued on Page 8)



Jay showed some ornamental bird houses.



Karen showed a variety of turned ornaments, some on 2 axes.



Arny showed classic ornaments with long finial. The base on each is the "bell pull" kit (2nd photo) He explained using a packet of brushes from Michaels to color white wood.



(Continued from page 3)

during one of the club meetings this year. Mostly I want to thank everyone that comes to our meetings; we have a great club and its because of all the people are so willing to be helpful and encouraging to one another. It's really great to see.

I can't wait to see what 2020 brings, bet-

ter eye sight - ok sorry bad joke. Before we can close out 2019 we have our party to enjoy and to spice it up a bit extra credit will go to anyone showing up with an Elf, Santa or holiday related accessory (hat, ears, clothing, you get the idea) or any food items that are wood or woodturning themed. No wood or sawdust in the food please 😊 Hope to see everyone at the Holiday par-

ty, and don't forget to ask Santa for a new tool or maybe even a new lathe! I hope December is filled with fun times and fun turnings for all. But don't forget safety first! Wear your helmet when turning and your face mask when sanding.

Jay

### Jay Visits The Barre Craft Show

The 29<sup>th</sup> annual Barre Craft show as held at the BOR on November 30<sup>th</sup> and December 1<sup>st</sup>. I went early on Saturday hoping to beat the crowds; as did about 200 others. I had to wait in line just to get into the building but I was not disappointed. There were 115 crafters showing their wares with 4-5 displaying woodturned pieces. I stopped to chat with our own Barry Genzlinger and Jason Brunault. Both guys had plenty of people around their tables so I didn't get to spend much time with them. They both have websites so here's info about them if you are interested:

Barry: <https://www.miltonartistsguild.org/barry-genzlinger>

Jay: <http://www.jayswoodshopvt.com/about.html>

The Barre Craft Show is a juried show; for more information about it go to <https://www.greaterbarrecraftguild.com/jury.html>

Fun Fact: Barry is Vermont's only bat rehabber. For more info go to <http://www.vermontbatcenter.org/about.html>



Jason Brunault minds his booth.



Barry shows both his famous tops AND a variety of bowls.

## Milton Pre-Christmas Craft Show

Photos by Sean Cannon



JoM Designs displayed at the Milton Pre-Christmas Craft Show.



Custom woodwork is displayed and offered for sale.

- 1) Lathrop Maple Supply, Hewitt Rd, Bristol, Vermont, 802-453-2897. With a newly expanded inventory area, Tom has a fantastic supply of local and imported wood. His new division, "Exclusively Vermont, LLC, specializes in high quality Vermont lumber and mill products and FSC stock is available.
- 2) Hayley Wood Products in Colchester. (<http://www.hayleywoodproducts.com/>).
- 3) Sutherland Welles Ltd., No. Hyde Park, VT, 800-322-1245. ([www.sutherlandwelles.com](http://www.sutherlandwelles.com)). Right here in our own back yard, they make the best Tung oil products in the U S. Call with an order and it goes out the same day!
- 4) Johnson Lumber, Route 116 in Bristol, VT. 802-453-4884. Another good "local" source for hardwood lumber of all kinds.
- 5) [www.exoticwoodsusa.com](http://www.exoticwoodsusa.com). They offer a 15% discount to any member of an AAW chapter. Type in 'exoticwoodsusaaw' in the coupon code box.
- 6) Griffin Exotic Woods These folks came up in a search for something else, and I ended up buying a couple things from them. Their prices were fair and the service was good. <http://www.exoticwood.biz/>
- 7) Sinclair Mill Works in North Danville VT <http://www.sinclairmillworks.com/home.htm>. 802-748-0948. He specializes in figure Vermont species. His prices are very reasonable.
- 8) Mike Jackofsky—hollowing tools. [www.mikejackofsky.com](http://www.mikejackofsky.com). Also sells thru Craft Supply.
- 9) Business cards and other printed goods: [Vistaprint.com](http://Vistaprint.com)
- 10) Laser engraving—Maple Land Mark Woodcraft. 800-421-4223 They are in Middlebury. [www.maplelandmark.com](http://www.maplelandmark.com)
- 11) Les Dougherty & Susan Curington Owners, North Woods Figured Wood North Woods,, LLC PO Box 808 Forest Grove OR 97116 [800-556-3106](tel:800-556-3106), [503-357-9953](tel:503-357-9953) [www.nwfiguredwoods.com](http://www.nwfiguredwoods.com) offers lifetime 15% discount on any website wood purchase. Use "WOODTURNERS" coupon code at checkout. [www.nwfiguredwoods.com](http://www.nwfiguredwoods.com)
- 12) Paw Prints Printing [WWW.paw-prints.com](http://WWW.paw-prints.com) 802 865 2872 Gregory Drive South Burlington, VT 05403
- 13) Your NEW colored plywood source. [trethaway@comcast.net](mailto:trethaway@comcast.net). Has scraps of colored plywood for resale. Listed on eBay as scratch101012. **(That's an email address. Try it.)**
- 14) The Tree House, hardwoods & mill shop. Native woods, priced from \$5.00. 1891 Williston Rd., 802-497-3530. [www.treehousehardwoods.com](http://www.treehousehardwoods.com)
- 15) Suffolk Saw of New England, Jeff & Danielle Mellott; 33 Gaudet Dr., Belmont, NH, 03220 877-550-7297

# Want Ads Mentors Wanted Share your Skills

## In House

### Demos:

All demos and dates are tentative until they appear on Page 1 of the newsletter.

**November 20** – Making Holiday Gifts

**December 11th** – Holiday Party – Yankee exchange.

**January 15th**—What I Learned Last Year - Members Round Table.

**February 19th**—Making Pepper Mills—Brad Dinwiddie

**March 18th.** Remote Demo—Mike Mahoney

**April 8th.**—April Board meeting—Randolph Center

**April 15th**—Resin Casting in Turnings—Brad Blaisdell

### Woodchuck Mentors

These Woodchucks are able and willing to help other Woodchucks wanting some hands-on instruction.

**Dick Montague:** General turning, all aspects plus tool sharpening. 802-584-3486

[Montagueturn@gmail.com](mailto:Montagueturn@gmail.com)  
Groton

**Russ Fellows:** General, segmented, & multi-axis turning 802-899-3059

[skunkmen@gmail.com](mailto:skunkmen@gmail.com)  
Jericho

**Ted Beebe:** Segmented work. 802-849-2436

[Teddy.beebe@gmail.com](mailto:Teddy.beebe@gmail.com)  
Fletcher

**Tom Dunne:** Hollow turning, etc. 802-388-6981

[jthomasdunne@gmail.com](mailto:jthomasdunne@gmail.com)  
Middlebury

**Brad Dinwiddie:** General turning, peppermills, utensils, pens 802-275-7185

[brad@frogpondwoodturning.com](mailto:brad@frogpondwoodturning.com)  
Underhill

### Instructors For Hire

**Nick Rosato-**  
802-999-2976  
[nickrosato@gmail.com](mailto:nickrosato@gmail.com)

Once and twice turned bowls  
Coring with the Oneway Coring system  
Understanding and using gouges  
Spindle turning and duplication  
Hollow Turning  
One-on-one instruction at my shop or your shop.  
Flexible scheduling. \$250 half day. \$400 full day.

### WTNV Liability Insurance

#### Liability Insurance Policy

As of April 2013 we are covered by a liability policy with the following limits:

Each occurrence: 2M; Damage to rented premises: 1M; Med expenses: 10K;

Personal injury: 2M; General aggregate: 4M; Products aggregate:4M.

The Hartford; Agent; Michael George:  
(317) 735 4072; [mgeorge@amj.ins.com](mailto:mgeorge@amj.ins.com)

This policy covers all members at all

WTNV events.

If you are demonstrating, this policy will not cover any claim if you are being compensated either by commission or sale of your turnings. In other words, this does not serve as an individual business policy.