

Woodchuck Chatter

The Newsletter of Woodchuck Turners of Northern Vermont

An Affiliate of American Association of Woodturners

Website: WWW.WOODCHUCKSVT.org



March 10, 2018

Volume 15, Number 3

March Meeting, 3/21/2018

Inside this issue:

Woodchuck Board info.	2
Random Shots—Choosing a Retirement Home	2
Treasurer's Report -Karen Drennen	3
Woodchuck Sightings	3
February Meeting Continued	4
February Hands-On Session	6
Decorating Dave's Vases	8
Invitation To The Trunk Show—Jim Holzschuh	8
Chips & Shavings From Skunk Hollow	9
Resource Page	11
Liability Insurance	12
Upcoming Demos	12
Mentor List	12
Classified Ads	12

We will meet at CVU this month. !
Directions to CVU: From the NW, exit I-89 at Exit 14 (Burlington) and head east on Williston Rd. (Rte. 2) for 1.2 miles. Turn right onto Hinesburg Rd (Rte. 116). Proceed 9.7 miles to CVU Rd., turn left at the light and CVU will be on you left at 0.4 miles.

From the East: Exit I-89 at exit 12 (Williston/Essex) Turn left onto Rte. 2A (St George Rd.) and proceed 5.0 miles. Turn left onto Rte. 116 and proceed 2.1 miles to CVU Rd. Turn left, school is 0.4 miles on left.

After turning onto driveway, take immediate left. Drive around the left side of the building to a parking lot with large garage door and exterior dust collection system. There is a door beside the garage door to enter the woodshop.

Bring along any tools you wish to see put in use.

The feature this month will be texturing and decorating. There are many styles of texturing tools available. Got one you would like to show us? Not sure how best to use it? Bring it along!!

February Meeting, 2/21/2018 —Harvie Porter

President Nick Rosato called the meeting to order at 7 PM. There were 27 in attendance. Thanks went to Eddie Krasnow for arranging for the meeting space.

Future meetings:

March 21 - Texturing, Coloring, Decorating - bring your tools and ideas to share

April 11 - Board Meeting (see last page for directions)

April 18 - Janet Collins

Upcoming turning events in the northeast:

March 24 and 25 Totally Turning Symposium in Saratoga.

May 12 - New England Woodturning at Pinkerton Academy, NH. Sponsored by the Guild of NH Woodturners.

Kudos went to Arny Spahn for another fine issue of *Chatter*.

The raffle was held with 17 participants.

Show and Tell:

Karen Drennen shared a couple of spoons she turned and carved. She also shared a couple of bowls and a

(Continued on page 4)

**Woodchuck Turners of
Northern Vermont
Board of Directors**

President:
Nick Rosato
The Sculpted Tree
106 Loaldo Drive
Burlington, VT 05408
802-999-2976
nickrosato@gmail.com

Vice-President:
Janet Collins
134 S. Bailey-Hazen Rd.
Ryegate, VT 05042
curlyacer@gmail.com
802-584-4341

Secretary: Harvie Porter
39 Randolph Ave.
Randolph, VT 05060
802-728-4265
weltradler@gmail.com

Treasurer: Karen Drennen
12 Winters Court
Swanton, VT 05488
Snowflake2017@comcast.net
802 868 6161

Member-At-Large & News-
letter Editor:
Arny Spahn
Reporter, Assistant Editor,
and Proof Reader:
Cil Spahn
89 Tom Wicker Lane #229
Randolph CTR., VT 05061
802-728-4799
apspahn@comcast.net

Member-At-Large:
Sal Chiarelli
20 Cabot Dr.
Essex, VT 05452
Schiarel@uvm.edu
802-316-0054

Member-At-Large:
Bob Martin
36 Calais Rd.
Worcester, VT 05682
Phone: 802-223-7475
martrlm@yahoo.com

Web Master: Jim Phelan
26 Philbrook St.
Barre, VT 05641
Phone: 802-476-5664
jmphelan.vt@gmail.com

We feel very lucky with the move we made to Morgan Orchards, our Senior Living Facility. It was a bit of a fight to get this 49-unit senior living building built. The nearest neighbors did not want their corner of the world changed. So, no car-ports, no covered parking. The compromise is a hired, 24/7 caretaker for the parking lot.

Supports we now have promise to keep us comfortable for a long time. Start with our trip out at 8:00 AM Thursday. We had gotten about 8" of snow by then, and walking the dog beforehand, I had to get off the path and kick a low spot for her. Our cars are parked just a few yards away from the building entrance, and at 7:30 they had not started to clear the lot yet. I told our maintenance guy that we had to get downtown for a meeting, went back into the apartment to bring the dog in & towel her off. Came out at 7:45, and the car was cleaned off and ready to go.

Still on the subject of support services, Cil & I each had some health problems this winter. Morgan Orchards is owned & operated by Gifford Health Care, Inc., which is the umbrella over the nursing home, the hospital, the senior living center, and the FQHC, which is itself an umbrella covering comprehensive health care. We have lived her in the Randolph area for over 45 years, had the same doc for over 40, and know most of the veteran nurses and docs very well. So, when Cil felt ill during a gathering here last week, she literally fell into the arms of the doc who's Head of Primary Care, assisted by the doc who until recently was the Head of Emergency Services. They talked her through her spell then "suggested" she go to the ER. All things being taken into consideration; time, her vital signs, my presence, we decided it would be best for me to drive Cil down rather than call an ambulance

and wait perhaps 3/4 of an hour. By getting her into the ER (the docs called ahead and cleared the way) they had a very clear picture of her condition close to the time she felt ill. We were finished with her exam and confident that she was over her immediate problem in less than 2 hours. We headed for home and that was that.

Then there was my problem. Right after Cil's visit to the hospital, I started to get sick. I was certain that the symptoms were flu-like. So we waited until Monday to ask for an appointment so we could get a prescription for flu medicine. Ever try to get an appointment in a hurry? Surprisingly, I got an appointment that morning. The doc checked me over & wanted to get a nose-sample down to the lab. They had run out of sampling kits! So, we agreed that he'd prescribe Tamiflu. It would not hurt if I didn't have flu, and might help if I did. The big problem is that Tamiflu costs \$100, and isn't covered by insurance. Here I am, 5 days later, almost totally clear of symptoms!

Our main reasons for moving into Morgan Orchards include continuing with our care partners and continuing to serve in our local community. It's comfortable here and safe. There are spaces for gatherings, spaces for hobbies, spaces to be alone, and there's someone on duty 24 hours a day for security and safety.

There are other reasons for choosing a Senior Living home, and you have to weigh all the factors before you make a choice. One overriding factor is, is it the right time? For us, that time was this year. We do not need help cooking, caring for ourselves or for our property. **BUT** as our two recent trips to the hospital show, our move was very timely.

Maybe I can get downstairs to the woodshop later.

Arny

Balance forward

\$3876.49
 Dues 2018 \$250.00
 Raffle \$34.00
 Glue \$44.00
 Sawdust donations \$6.00
 Total Income \$334.00
 VT Sales & Use Tax \$84.36
 VT Amended Biennial Report \$25.00
 Expenses \$109.36
 Balance ending \$4101.13
 Karen Drennen/Treasurer

Reminder: Unless you have paid your annual dues by April 1st your name must be removed from the discount list.

Dues January 2018

The Board of Directors of The Woodchuck Turners of Northern Vermont gratefully acknowledges the payment of dues from the following members for 2018:

Ted Beebe, Dale Bergdahl, Chris Bishop, Bradford Blaisdell, James Bushey, Sal Chiarelli, Michael Deweese, Karen Drennen, Greg Drew, William Durkee, Andrew Durling, Ted Fink, Joe Fortin, George Gibson, Jim Holzschuh, Brad Jackson, Eddie Krasnow, Chris Lumbra, Bob Martin, Ted Nelson, Stephen O'Donnell, Bengt Ohman, Mickey Palmer, Mike Papin, Harvie Porter, Randy Ramsden, Brian Reed, David Scrase, Edwards Smith, Arny Spahn, Cil Spahn, Adam Wagner (32)

(Scott Bennett, Russ Fellows, Dick Montague, Michael Mode, Hav Smith and Al Stirt are Honorary Lifetime members, (6)

If you have paid your dues for the year but do not see your name listed here please contact me to correct that error of omission.

Snowflake2017@comcast.net

Dues for 2018 are \$25. Checks should be made out to "WTNV" and sent to: Karen Drennen, 12 Winters Court, Swanton VT 05488

Please note: The following privileges are only available to dues-paying members: Video library use, mentoring program, bulk purchase discounts such as CA glue and Anchor Seal, Klingspor and Hartville Tool discount lists, (to remain on the discount lists dues must be paid by April 1st each year).

Welcome New Member

Chris Bishop
 1007 Dorset St
 S. Burl VT 05403
 802-238-2045
CBishopVT@comcast.net

Woodchuck Sightings

Last month I was delighted to be able to host here in Sarasota, fellow Woodchuck Tom Dunne and his wife Sarah. They were on a "getaway" trip from their winter home in New Orleans during Mardi Gras! Also visiting other friends in Florida, it was wonderful to have them for a few days! In addition to showing them around Sarasota a little, Tom got to spend some time in my shop. He had brought a gorgeous chunk of claro walnut that he wanted to finish and add a rim to. Pic #306 shows him at the lathe working on this. I donated some nicely figured curly maple for this and also showed him how to do a three cornered bowl using a multi-axis technique. The three pictures below show the walnut bowl with curly maple rim, the three corner maple bowl, and a cherry laurel bowl he made from a blank I gave him. He did it the right way, once-turning it to minimize the cracking risk inherent with cherry laurel. All nice pieces, Tom! Thanks!

"Skunk Hollow South"!! Don't hesitate!!

Russ Fellows



Visitors are always welcome at

(Continued from page 1)



Karen with spoons; her bowls & spoons.

box she had made. Jim Holzschuh shared a bowl of red box elder that had broken, been repaired and whose cracks were filled with brass filings. He compared this to the Japanese art of pottery repair, kintsugi – the art of precious scars. Ted Fink shared a wooden candlestick he modeled after a design he found during the time he spent in Germany. Dave Buchholtz showed two pairs of maple branch bowls that he called a study in complementarity. He also shared several bowls of cherry, maple and beech that had been turned with a catenary curve and had covers carved in the outside with various adornments. He also showed a bi-cylinder he turned. Brad Dinwiddie shared a

pepper mill, a shaving brush, and a razor handle he had turned. Nick Rosato shared a turned spoon, rolling pin, pepper mill, top, oversized butter cutter, serving tray with finial handle and a base for a lamp. He also showed two large ash bowls.

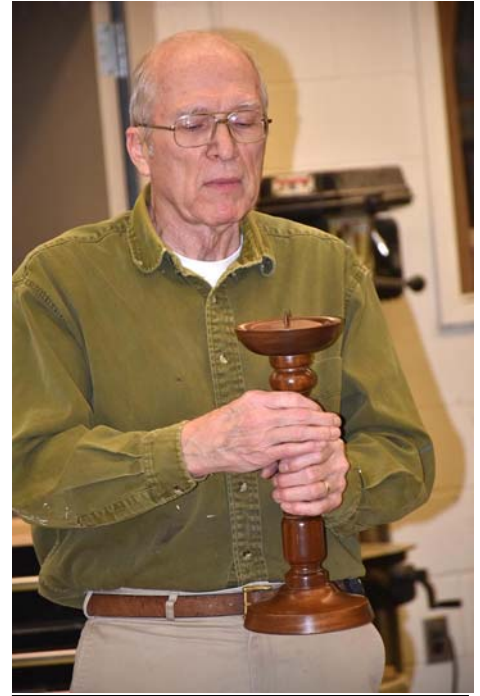
The meeting then adjourned for the spindle turning hands-on session.



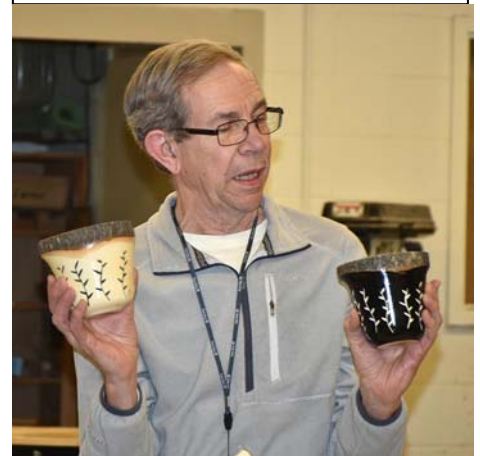
Jim Holzschuh & his "broken" box-elder bowl.

Respectfully submitted,

Harvie Porter, Secretary



Ted Fink & multi-part candlestick.



(Continued on page 5)



(previous page) Dave & contrast vases;
above, some of Dave's crafted bowls.

Brian Dinwiddie & several turnings.



Harvie shows some cored-out Cherry
bowls.



Some of Nick's show & Tell.



Ted shows working up a newel-post



Starting to rough-out the post.



Bob Martin works on the post.



Bob Dinwiddie starts to carve beads & coves.



Showing how to start with the spindle roughing gouge.



Rolling the spindle gouge to make even covers.



Here's how to form a bead.



Smoothing with a skew.





At the February meeting I brought in several open natural edge maple vases that were colored and carved. I called them a study in complementarity. An example in black is shown here. To create the vase with the solid background color, I treated the sanded but unfinished wood with color. For the black I use India ink and for the other colors I used fabric reactive dyes dissolved in water. Dissolving in water gives more vibrant colors than dissolving them in alcohol. The water based dyes will raise the grain and require a light sanding. The alcohol based dyes dry faster and do not raise the grain but do not have the vibrancy of color. After the color has dried I apply several coats of Spar varnish thinned by half with paint thinner. I apply the thinned varnish with a paper towel while the vase ro-

tates slowly on the lathe. After I am satisfied with the build up of the varnish, I carve the pattern with a reciprocating carver. I use super black India ink from Speedball which contains shellac in solution. You can apply the ink with an inexpensive foam brush for large surfaces like on the vase on the left. It produces a uniform black surface with a few coats. For the colors I use fiber reactive dye from Dharma Trading Company. These are dyes that are also used to produce tie dyed tee shirts. I ordered both the dye and ink from suppliers on the internet. You may be able to get the Speedball India ink from a store like Michaels also.

For the vase on the right, I applied several layers of varnish to the sanded but unfinished wood. After sufficient build up of the varnish, I again used the reciprocating carver to create the pattern on the side of the vase. Now the incised portion no longer has any finish protecting the surface, so I can apply color directly to that part. I use a fine paint brush to add the color in the grooves. It is surprisingly easy to get the colors to stay where you want since the incised areas channel the liquid colors. If you get color in the varnished area, just lightly sand them. The varnish will keep the color from soaking into the wood so can be removed with light sanding. You will have to apply varnish over the surface when you are done.

Dave Buchholz

Invitation To The Trunk Show—Jim Holzschuh

Fellow wood turners take note - this year will be the 8th annual Trunk Show at the Grand Isle Art Works gallery in Grand Isle. A trunk show is an event in which vendors present merchandise (sometimes new work) directly customers at a retail



location or another venue. In recent years we have had approximately 35 to 40 artists set up on the grounds of the gallery for the weekend. Like previous years, there will be a large tent where we will have space for up to 8 woodworkers to demonstrate their craft and sell their artwork. Additional woodworkers are always invited to set up under their own

individual 10x10 pop-up tents and join the festivities. If you have not been to the gallery you will find that we have plenty of parking space for visitors and outside vendors alike, approximately 75 Vermont artists' work in the gallery and a small on-site cafe. As Ellen and I raise fiber animals we also have some of our Angora goats at the gallery during the summer which has proven to be a draw for potential customers.



This year the Trunk Show will be on the last weekend in July, 28 and 29. There is a \$25.00 fee to reserve a space which will



be returned to the artist at the end of the weekend. During the weekend you keep track of your sales and pay 20% to the gallery at the end. You can sign up online at <http://grandisleartworks.com/trunk-show-and-sale/trunk-show-call-to-artists/> or you can also print out an application from a link at the bottom of that page. Consider coming to the Islands for the weekend.

Greetings again from Florida fellow "Woodchucks"!

Once again my news here is 'wood news'. I may have to start calling myself a "recovering" segmented turner, as the wealth of green wood available down here to our club distracts me from my segmented work so much that I have only 4 or 5 segmented pieces going right now instead of the usual 12-15!

As I have previously reported, every Tuesday we gather in our log yard, a.k.a., the shop of Franck Johannesen (<http://www.franckwoodturning.com/>) to sort through and cut up the latest offerings from the loggers and arborists with whom we have connections. This week we had no new deliveries, but were trying to just get some of the clutter cleaned up for Franck.



331

In pic #331 Norm, still recovering from back surgery, gets light duty



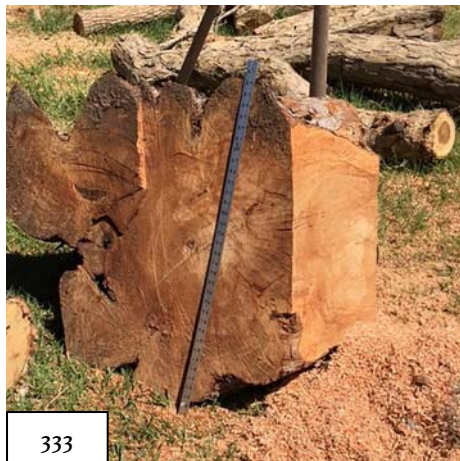
332

picking up chips. In pic #332, fellow New Englander Bill, finishes cutting up a big eucalyptus. There has been so much wood debris in Franck's



321

yard lately that he couldn't get his trailer, seen here in the background, out to be ready for the next call to go get a log in someone's yard. Not all our wood is delivered!



333

Pic #333 show what's left of a Golden Rain Tree (<https://www.naturehills.com/golden-rain-tree>), a common landscaping tree throughout the south, mostly because of the long-lasting yellow blossoms. Yes, that is a yardstick leaning up against it! Pic #338 shows a huge bowl I roughed out of a piece of it just this morning.

Cherry laurel update: the big piece I cored out and reported on back in December, pic #317, is drying nicely.....without, so far, cracking! It is



338

quite difficult to dry and usually once turned to the finished dimension because it does crack so easily. More on that later.



317

Pic #321 shows a piece of Red Bay (<http://hort.ifas.ufl.edu/woody/Pages/perbor/perbor.shtml>) that a friend gave me, chucked up on my lathe. Because it wasn't very big I made a natural edge bowl out of it, pic#340. It is not a great turning wood, fairly soft, and a little gummy when green. It did however dry nicely and with an orange oil and beeswax finish, doesn't look too bad!

China berry (<https://www.gardeningknowhow.com/ornamental/trees/chinaberry/chinaberry-tree-information.htm>),

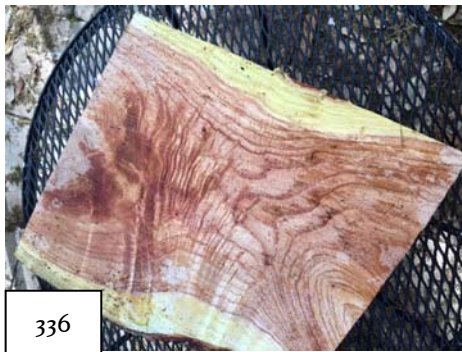
(Continued on page 10)

(Continued from page 9)



340

another tree here that is classified as invasive, can actually produce nice grain patterns and is not a bad wood to turn.



336

Pic #336 shows a crotch piece I cut yesterday. It has lovely curl and feather and dries easily. Last week I tried to texture a small chunk of it with a cheap sandblaster I got at Harbor Freight....see, Sarasota has every-

thing! It (the \$18 blaster gun) didn't do much so I soaked the piece overnight in a strong bleach solution. That softened the grain enough to be able to wire brush away the softest parts to leave a nice textured surface. In pic #341 you can see the results. The top is a piece of cocobolo. This particular vessel is only about five inches across, but I like the look enough to try it on a bigger piece?



341

China berry, like ash, has very differentiated soft and hard annual growth rings, so is a good species on which to try this.

The final pic, #337, is a piece of Australian Pine. A gift from another woodchuck, it shows how it is starting to spalt. It is a really invasive and fast-growing tree that the state of Florida has on its "hit list" to try to eradicate! I will keep it in a plastic



337

bag for a while, just to see how much more color it develops, but I think probably it is headed for the burn pile?

Next month, I will talk a little more about one of our premium turning woods, Norfolk Island Pine. It is not actually even a Pine, and it is quite soft, but its beauty is in the spectacular spalting patterns it develops. I have brought some pieces back home and put in our club raffle, so some of you already know it.

Cheers!

Russ Fellows

- 1) Lathrop Maple Supply, Hewitt Rd, Bristol, Vermont, 802-453-2897. With a newly expanded inventory area, Tom has a fantastic supply of local and imported wood. His new division, "Exclusively Vermont, LLC, specializes in high quality Vermont lumber and mill products and FSC stock is available.
- 2) Hayley Wood Products in Colchester. (<http://www.hayleywoodproducts.com/>).
- 3) Sutherland Welles Ltd., No. Hyde Park, VT, 800-322-1245. (www.sutherlandwelles.com). Right here in our own backyard, they make the best Tung oil products in the U S. Call with an order and it goes out the same day!
- 4) Bad Dogs Burl Source, (www.burlsource.com) They are down in Belchertown, MA and have an incredible inventory of Australian and North American burls. 413-213-0248
- 5) Johnson Lumber, Route 116 in Bristol, VT. 802-453-4884. Another good "local" source for hardwood lumber of all kinds.
- 6) www.exoticwoodsusa.com. They offer a 15% discount to any member of an AAW chapter. Type in 'exoticwoodsusaaw' in the coupon code box.
- 7) Griffin Exotic Woods These folks came up in a search for something else, and I ended up buying a couple things from them. Their prices were fair and the service was good. <http://www.exoticwood.biz/>
- 8) Sinclair Mill Works in North Danville VT <http://www.sinclairmillworks.com/home.htm>. 802-748-0948. He specializes in figure Vermont species. His prices are very reasonable.
- 9) Woodturning Videos and eBooks by Steven D. Russell <http://www.woodturningvideosplus.com/>. This website is full of tips & instructions for turners.
- 10) Mike Jackofsky—hollowing tools. www.mikejackofsky.com. Also sells thru Craft Supply.
- 11) Business cards and other printed goods: Vistaprint.com
- 12) Laser engraving—Maple Land Mark Woodcraft. 800-421-4223 They are in Middlebury. www.maplelandmark.com
- 13) Les Dougherty & Susan Curington Owners, North Woods Figured Wood North Woods, LLC PO Box 808 Forest Grove OR 97116 [800-556-3106](tel:800-556-3106), [503-357-9953](tel:503-357-9953) www.nwfiguredwoods.com offers lifetime 15% discount on any website wood purchase. Use "WOODTURNERS" coupon code at checkout. www.nwfiguredwoods.com
- 14) Paw Prints Printing WWW.paw-prints.com 802 865 2872 Gregory Drive South Burlington, VT 05403
- 15) Your NEW colored plywood source. trethaway@comcast.net. Has scraps of colored plywood for resale. Listed on eBay as scratch101012.
- 16) The Tree House, hardwoods & mill shop. Native woods, priced from \$5.00. 1891 Williston Rd., 802-497-3530. www.treehousehardwoods.com
- 17) Suffolk Saw of New England, Jeff & Danielle Mellott; 33 Gaudet Dr., Belmont, NH, 03220 877-550-7297

Classified Ads

Free To Members

Joe Laferriere has a belt sander for sale.
Joe Laferriere
<jlaferriere@myfairpoint.net>

In House

Demos:

All demos and dates
are tentative until
they appear on Page
1 of the newsletter.

Mar. 21st: Texturing and
decorating stations

Apr. 11th: Board Meeting

Directions to the Board
meeting on April 11th at Sal's
home: To get to 20 Cabot
Drive, go through the town of
Essex on Main St. (Route 15).
Go past the intersection with I-
289. The first road on the left
will be Butler's Corners. The
second will be Londonderry
Lane. Take it. Take the first
left, then the next left and you
should be on Cabot Drive. Sal
should have something to
show us his house.

All members are welcome.
Board members should be
prepared to bring part of the
feast. Please arrive by 6:00 PM.

Apr. 18th: Janet Collins -
Topic TBA

Woodchuck Mentors

These Woodchucks are able and
willing to help other Woodchucks
wanting some hands-on instruction.

**Craig Hall: Bowls, spindles, &
hollow forms.**
802-644-5344
craighall@hotmail.com
Cambridge

**Dick Montague: General turning,
all aspects plus tool sharpening.**
802-584-3486
Montagueturn@gmail.com
Groton

**Ralph Tursini: Spindles & bowls,
vacuum chucking.**
802-899-6863
info@vermontwoodturning.com
Cambridge

Russ Fellows: Segmented vessels.
802-899-3059
skunkmen@gmail.com
Jericho

Bill Walsh: tool sharpening
802-839-6332
billiriquois@yahoo.com
Northfield

**Greg Drew: Tool skills. Finishes..
Portable mill & chainsaw work.**
802-527-6207
personal-woodsmythe@yahoo.com
Georgia

Nick Rosato
The Sculpted Tree
802-999-2976
nickrosato@gmail.com
General turning

WTNV Liability Insurance

Liability Insurance Policy

As of April 2013 we are covered by a liability policy with the following limits:

Each occurrence: 2M; Damage to rented premises: 1M; Med expenses: 10K;

Personal injury: 2M; General aggregate: 4M; Products aggregate: 4M.

The Hartford; Agent; Michael George:
(317) 735 4072; mgeorge@amj.ins.com

This policy covers all members at all

WTNV events.

If you are demonstrating, this policy will not cover any claim if you are being compensated either by commission or sale of your turnings. In other words, this does not serve as an individual business policy.